

Datasheet for ABIN489932  
**anti-SELPLG antibody (PE)**

## 3 Images

[Go to Product page](#)

## Overview

Quantity:	100 tests
Target:	SELPLG
Reactivity:	Human
Host:	Mouse
Clonality:	Monoclonal
Conjugate:	This SELPLG antibody is conjugated to PE
Application:	Flow Cytometry (FACS)

## Product Details

Immunogen:	Human thymocytes
Clone:	TC2
Isotype:	IgG1
Specificity:	The antibody TC2 reacts with an extracellular epitope of CD162, a 220 kDa type I integral membrane protein expressed as disulfide-linked homodimer (sialomucin family). CD162 is present on the most peripheral blood T lymphocytes, monocytes, granulocytes, it is also expressed on a subpopulation of B lymphocytes and CD34 <sup>+</sup> bone marrow cells.
Cross-Reactivity (Details):	Human
Purification:	Purified antibody is conjugated with R-phycoerythrin (PE) under optimum conditions. Unconjugated antibody and free fluorochrome are removed by size-exclusion chromatography.

## Target Details

Target:	SELPLG
Alternative Name:	CD162 ( <a href="#">SELPLG Products</a> )
Background:	Selectin P ligand,CD162 (P-selectin glycoprotein ligand-1, PSGL-1) is a sialomucin constitutively expressed as a disulfide-linked homodimer of two 120 kDa subunits on the surface of circulating leukocytes. CD162 serves as a ligand for P- E- and L-selectin, with the highest affinity for P-selectin. It is thus involved in leukocyte rolling at the endothelial surfaces, prerequisite for firm leukocyte adhesion and subsequent transendothelial migration. CD162 also mediates leukocyte-platelet adhesion and interleukocyte contacts. Whereas serving as an adhesion molecule on mature leukocytes, CD162 is a potent negative regulator of human hematopoietic progenitors.,PSGL-1, Selectin P ligand, SELPLG, CLA
Gene ID:	6404
UniProt:	<a href="#">Q14242</a>

## Application Details

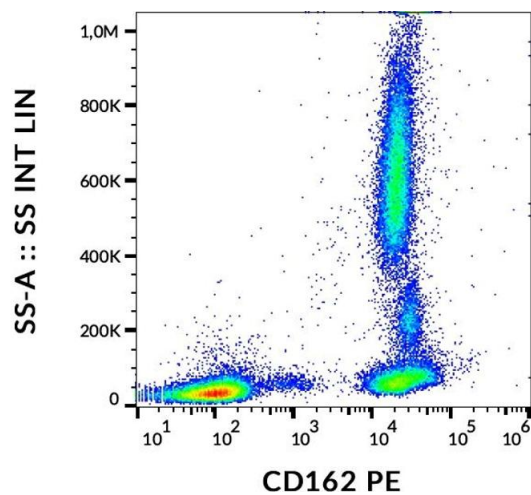
Application Notes:	Flow cytometry: The reagent is designed for analysis of human blood cells using 20 µL reagent / 100 µL of whole blood or 10 <sup>6</sup> cells in a suspension. The content of a vial (2 ml) is sufficient for 100 tests.
Comment:	The purified antibody is conjugated with R-Phycoerythrin (PE) under optimum conditions. The conjugate is purified by size-exclusion chromatography and adjusted for direct use. No reconstitution is necessary.
Restrictions:	For Research Use only

## Handling

Reconstitution:	No reconstitution is necessary.
Buffer:	Stabilizing phosphate buffered saline (PBS), pH 7.4, 15 mM sodium azide
Preservative:	Sodium azide
Precaution of Use:	This product contains Sodium azide: a POISONOUS AND HAZARDOUS SUBSTANCE which should be handled by trained staff only.
Handling Advice:	<b>Do not freeze.</b> Avoid prolonged exposure to light.
Storage:	4 °C

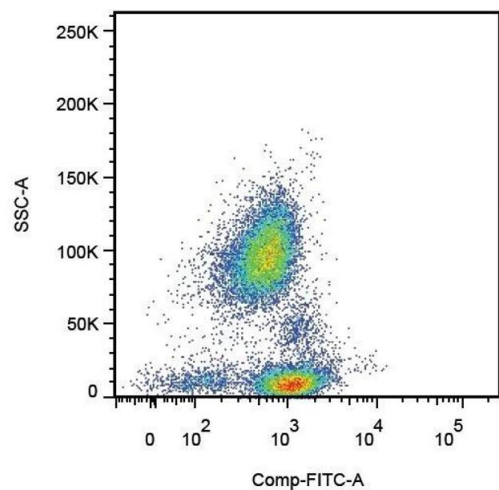
Storage Comment: Store at 2-8°C. Protect from prolonged exposure to light. Do not freeze.

Images



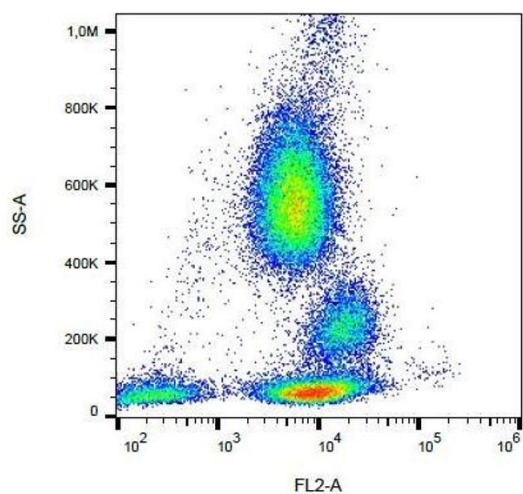
Flow Cytometry

**Image 1.** Flow cytometry analysis (surface staining) of human peripheral blood cells with anti-human CD162 (clone TC2) PE.



Flow Cytometry

**Image 2.** Surface staining of human peripheral blood cells with anti-human CD162 (clone TC2).



Flow Cytometry

**Image 3.** Surface staining of human peripheral blood cells with anti-human CD162 (clone TC2) PE.