

Datasheet for ABIN490044
anti-HYAL1 antibody (AA 36-85)[Go to Product page](#)

2 Images

Overview

Quantity:	50 µg
Target:	HYAL1
Binding Specificity:	AA 36-85
Reactivity:	Human, Mouse, Rat, Cow, Dog, Guinea Pig, Horse, Bat
Host:	Rabbit
Clonality:	Polyclonal
Conjugate:	This HYAL1 antibody is un-conjugated
Application:	Western Blotting (WB), Immunohistochemistry (IHC), Immunohistochemistry (Paraffin-embedded Sections) (IHC (p))

Product Details

Brand:	IHC-plus™
Immunogen:	Synthetic peptide located between aa36-85 of human HYAL1 (Q12794, NP_695014). Percent identity by BLAST analysis: Human, Chimpanzee, Gorilla, Gibbon, Mouse, Rat, Elephant, Bat, Horse, Guinea pig (100%), Galago, Marmoset, Rabbit, Pig (92%), Monkey, Dog (85%), Bovine (83%). Type of Immunogen: Synthetic peptide
Isotype:	IgG
Specificity:	Human HYAL1
Predicted Reactivity:	Percent identity by BLAST analysis: Human, Mouse, Rat, Horse, Guinea pig (100%) Rabbit, Pig

Product Details

(92%) Dog (85%) Bovine (83%).

Purification: Immunoaffinity purified

Target Details

Target: HYAL1

Alternative Name: HYAL1 ([HYAL1 Products](#))

Background: Name/Gene ID: HYAL1

Synonyms: HYAL1, FUS2, Hyaluronidase-1, Hyaluronoglucosaminidase 1, LUCA1, Hyaluronoglucosaminidase-1, Plasma hyaluronidase, LuCa-1, Tumor suppressor LUCA-1, HYAL-1, Lung carcinoma protein 1

Gene ID: 3373

NCBI Accession: [NP_695014](#)

UniProt: [Q12794](#)

Pathways: [Glycosaminoglycan Metabolic Process](#)

Application Details

Application Notes: Approved: IHC, IHC-P (5 µg/mL), WB (1 µg/mL)

Usage: Immunohistochemistry: This antibody was validated for use in immunohistochemistry on a panel of 21 formalin-fixed, paraffin-embedded (FFPE) human tissues after heat induced antigen retrieval in pH 6.0 citrate buffer. After incubation with the primary antibody, slides were incubated with biotinylated secondary antibody, followed by alkaline phosphatase-streptavidin and chromogen. The stained slides were evaluated by a pathologist to confirm staining specificity. The optimal working concentration for this antibody was determined to be 10 µg/mL. Western Blot: Suggested dilution at 1 µg/mL in 5 % skim milk / PBS buffer, and HRP conjugated anti-Rabbit IgG should be diluted in 1: 50,000 - 100,000 as second antibody. ELISA titer in peptide based assay: 1:62500.

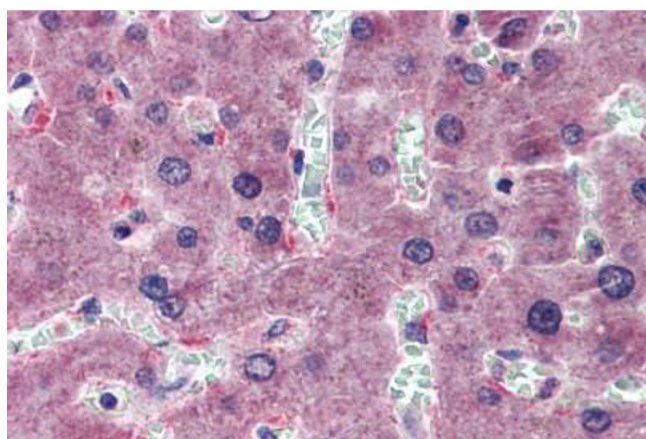
Comment: Target Species of Antibody: Human

Restrictions: For Research Use only

Handling

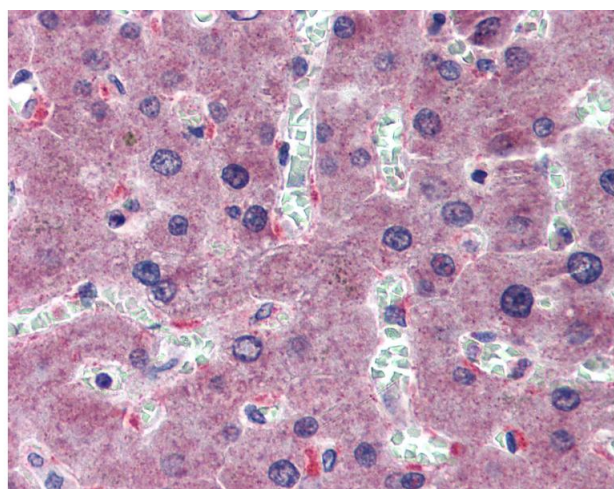
Format:	Lyophilized
Reconstitution:	Distilled water
Concentration:	Lot specific
Buffer:	Lyophilized from PBS with 2 % sucrose
Handling Advice:	Avoid repeat freeze-thaw cycles.
Storage:	4 °C,-20 °C
Storage Comment:	Long term: -20°C, the use of 50% glycerol is recommended if storing aliquots in -20°C for long term use (up to 1 year) Short term (less than 1 week): 4°C. Avoid freeze-thaw cycles.

Images



Immunohistochemistry (Formalin-fixed Paraffin-embedded Sections)

Image 1. Liver, Human: Formalin-Fixed, Paraffin-Embedded (FFPE)



Immunohistochemistry

Image 2. Anti-HYAL1 antibody IHC of human liver. Immunohistochemistry of formalin-fixed, paraffin-embedded tissue after heat-induced antigen retrieval. Antibody concentration 5 ug/ml. This image was taken for the unconjugated form of this product. Other form ...