

Datasheet for ABIN490056  
**anti-GNAS antibody (AA 36-85)**

## 3 Images

[Go to Product page](#)

## Overview

Quantity:	50 µg
Target:	GNAS
Binding Specificity:	AA 36-85
Reactivity:	Human, Mouse, Rat, Dog, Cow, Pig, Horse, Guinea Pig, Monkey, Hamster, Bat
Host:	Rabbit
Clonality:	Polyclonal
Conjugate:	This GNAS antibody is un-conjugated
Application:	Western Blotting (WB), Immunohistochemistry (IHC), Immunohistochemistry (Paraffin-embedded Sections) (IHC (p))

## Product Details

Brand:	IHC-plus™
Immunogen:	Synthetic peptide located between aa36-85 of human GNAS (P63092, NP_000507). Percent identity by BLAST analysis: Human, Gorilla, Gibbon, Monkey, Galago, Marmoset, Mouse, Rat, Hamster, Elephant, Dog, Bovine, Bat, Horse, Pig, Guinea pig (100%).  Type of Immunogen: Synthetic peptide
Isotype:	IgG
Specificity:	Human GNAS
Predicted Reactivity:	Percent identity by BLAST analysis: Human, Mouse, Rat, Dog, Bovine, Horse, Pig, Guinea pig (100%).

## Product Details

Purification: Immunoaffinity purified

## Target Details

Target: GNAS

Alternative Name: GNAS ([GNAS Products](#))

Background: Name/Gene ID: GNAS

Synonyms: GNAS, AHO, C20orf45, Extra large alphas protein, GSP, GNAS complex locus, GNASXL, NESP, PHP1B, PHP1C, PHP1A, POH, SCG6, XLalphas, GNAS1, GPSA, GSA, NESP55, Protein ALEX, Secretogranin VI

Gene ID: 2778

NCBI Accession: [NP\\_000507](#)

UniProt: [Q5JWF2](#)

Pathways: [Thyroid Hormone Synthesis](#), [cAMP Metabolic Process](#), [Myometrial Relaxation and Contraction](#), [Embryonic Body Morphogenesis](#)

## Application Details

Application Notes: Approved: IHC, IHC-P (5 µg/mL), WB (1 µg/mL)

Usage: Immunohistochemistry: This antibody was validated for use in immunohistochemistry on a panel of 21 formalin-fixed, paraffin-embedded (FFPE) human tissues after heat induced antigen retrieval in pH 6.0 citrate buffer. After incubation with the primary antibody, slides were incubated with biotinylated secondary antibody, followed by alkaline phosphatase-streptavidin and chromogen. The stained slides were evaluated by a pathologist to confirm staining specificity. The optimal working concentration for this antibody was determined to be 5 µg/mL. Western Blot: Suggested dilution at 1 µg/mL in 5 % skim milk / PBS buffer, and HRP conjugated anti-Rabbit IgG should be diluted in 1: 50,000 - 100,000 as second antibody. ELISA titer in peptide based assay: 1:62500.

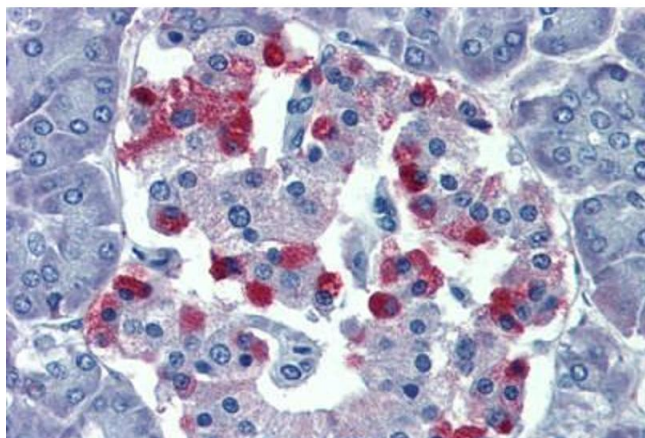
Comment: Target Species of Antibody: Human

Restrictions: For Research Use only

## Handling

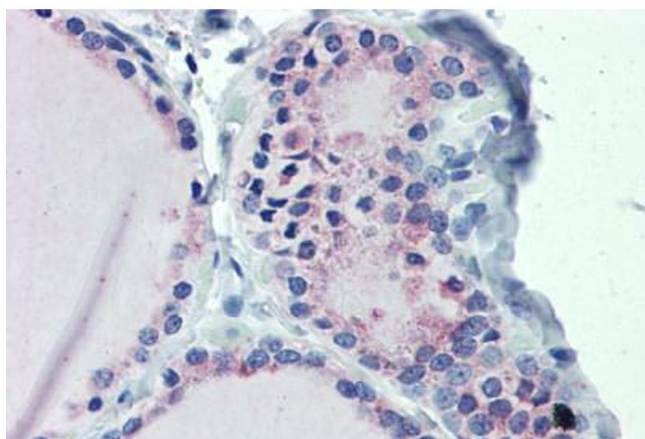
Format:	Lyophilized
Reconstitution:	Distilled water
Concentration:	Lot specific
Buffer:	Lyophilized from PBS with 2 % sucrose
Handling Advice:	Avoid repeat freeze-thaw cycles.
Storage:	4 °C, -20 °C
Storage Comment:	Long term: -20°C, the use of 50% glycerol is recommended if storing aliquots in -20°C for long term use (up to 1 year) Short term (less than 1 week): 4°C. Avoid freeze-thaw cycles.

## Images



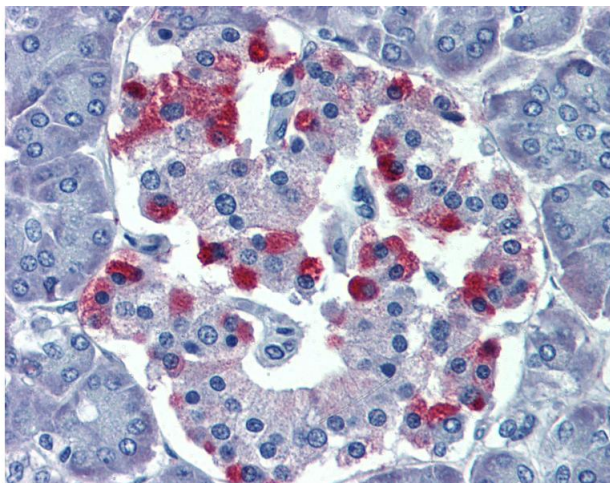
### Immunohistochemistry (Formalin-fixed Paraffin-embedded Sections)

**Image 1.** Pancreas, Human: Formalin-Fixed, Paraffin-Embedded (FFPE)



### Immunohistochemistry (Formalin-fixed Paraffin-embedded Sections)

**Image 2.** Thyroid, Human: Formalin-Fixed, Paraffin-Embedded (FFPE)



#### Immunohistochemistry

**Image 3.** Anti-GNAS antibody IHC of human pancreas. Immunohistochemistry of formalin-fixed, paraffin-embedded tissue after heat-induced antigen retrieval. Antibody concentration 5 ug/ml.