

Datasheet for ABIN490060

anti-Tyrosinase-Related Protein 1 antibody (AA 396-445)[Go to Product page](#)**2** Images

Overview

Quantity:	50 µg
Target:	Tyrosinase-Related Protein 1 (TYRP1)
Binding Specificity:	AA 396-445
Reactivity:	Human, Mouse, Rat, Dog, Goat, Horse, Rabbit, Sheep, Guinea Pig, Zebrafish (Danio rerio), Monkey, Chicken, Bat
Host:	Rabbit
Clonality:	Polyclonal
Conjugate:	This Tyrosinase-Related Protein 1 antibody is un-conjugated
Application:	Western Blotting (WB), Immunohistochemistry (IHC), Immunohistochemistry (Paraffin-embedded Sections) (IHC (p))

Product Details

Brand:	IHC-plus™
Immunogen:	Synthetic peptide located between aa396-445 of human TYRP1 (P17643, NP_000541). Percent identity by BLAST analysis: Human, Chimpanzee, Gorilla, Gibbon, Monkey, Galago, Marmoset, Mouse, Rat, Sheep, Goat, Panda, Dog, Cat, Bat, Rabbit, Horse, Guinea pig, Chicken, Platypus (100%), Elephant, Bovine, Pig, Opossum, Zebra finch, Lizard (92%), Xenopus (85%), Pufferfish, Zebrafish (83%). Type of Immunogen: Synthetic peptide
Isotype:	IgG

Product Details

Specificity:	Human TYRP1
Predicted Reactivity:	Percent identity by BLAST analysis: Human, Mouse, Rat, Sheep, Dog, Goat, Rabbit, Horse, Guinea pig (100%) Bovine, Pig, Chicken (92%) Zebrafish (83%).
Purification:	Immunoaffinity purified

Target Details

Target:	Tyrosinase-Related Protein 1 (TYRP1)
Alternative Name:	TYRP1 / gp75 (TYRP1 Products)
Background:	<p>Name/Gene ID: TYRP1</p> <p>Synonyms: TYRP1, B-PROTEIN, CAS2, CATB, Glycoprotein 75, Hstyrp, gp75, OCA3, SHEP11, TRP-1, Tyrosinase-related protein 1, TYRP, TYRRP, Catalase B, DHICA oxidase, Melanoma antigen gp75</p>
Gene ID:	7306
NCBI Accession:	NP_000541
UniProt:	P17643

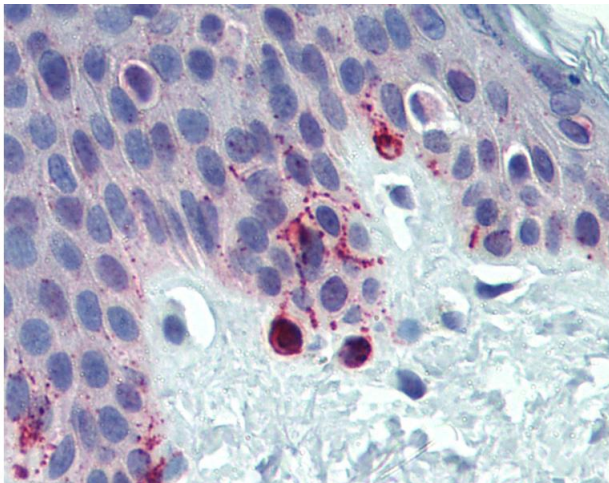
Application Details

Application Notes:	<p>Approved: IHC, IHC-P (5 µg/mL), WB (1 µg/mL)</p> <p>Usage: Immunohistochemistry: This antibody was validated for use in immunohistochemistry on a panel of 21 formalin-fixed, paraffin-embedded (FFPE) human tissues after heat induced antigen retrieval in pH 6.0 citrate buffer. After incubation with the primary antibody, slides were incubated with biotinylated secondary antibody, followed by alkaline phosphatase-streptavidin and chromogen. The stained slides were evaluated by a pathologist to confirm staining specificity. The optimal working concentration for this antibody was determined to be 5 µg/mL. Western Blot: Suggested dilution at 1 µg/mL in 5 % skim milk / PBS buffer, and HRP conjugated anti-Rabbit IgG should be diluted in 1: 50,000 - 100,000 as second antibody. ELISA titer in peptide based assay: 1:312500.</p>
Comment:	Target Species of Antibody: Human
Restrictions:	For Research Use only

Handling

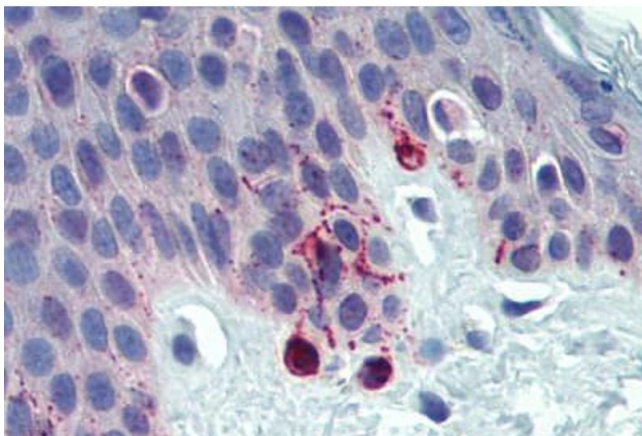
Format:	Lyophilized
Reconstitution:	Distilled water
Concentration:	Lot specific
Buffer:	Lyophilized from PBS with 2 % sucrose
Handling Advice:	Avoid repeat freeze-thaw cycles.
Storage:	4 °C,-20 °C
Storage Comment:	Long term: -20°C, the use of 50% glycerol is recommended if storing aliquots in -20°C for long term use (up to 1 year) Short term (less than 1 week): 4°C. Avoid freeze-thaw cycles.

Images



Immunohistochemistry

Image 1. Anti-TYRP1 /gp75 antibody IHC of human skin. Immunohistochemistry of formalin-fixed, paraffin-embedded tissue after heat-induced antigen retrieval. Antibody concentration 5 ug/ml. This image was taken for the unconjugated form of this product. Other ...



Immunohistochemistry (Formalin-fixed Paraffin-embedded Sections)

Image 2. Skin, Human: Formalin-Fixed, Paraffin-Embedded (FFPE)