

Datasheet for ABIN490082

anti-CCR4 antibody (Extracellular Domain)**3** Images[Go to Product page](#)

Overview

Quantity:	50 µg
Target:	CCR4
Binding Specificity:	Extracellular Domain
Reactivity:	Human, Monkey
Host:	Goat
Clonality:	Polyclonal
Conjugate:	This CCR4 antibody is un-conjugated
Application:	ELISA, Western Blotting (WB), Flow Cytometry (FACS), Immunohistochemistry (IHC), Immunohistochemistry (Paraffin-embedded Sections) (IHC (p))

Product Details

Brand:	IHC-plus™
Immunogen:	17SNYYLYESIPKPCTKEGIKAFGE39 corresponding to human CCR4 extracellular domain. Percent identity by BLAST analysis: Human, Gorilla, Monkey, Marmoset (100%), Gibbon, Panda (96%), Hamster, Dog, Horse (91%), Elephant, Rabbit (87%), Mouse (83%).
Specificity:	Peptide sequence is <50 % identical to other chemokine receptors in this region.
Predicted Reactivity:	Percent identity by BLAST analysis: Human, Gorilla, Monkey, Marmoset (100%) Gibbon, Panda (96%) Hamster, Dog, Horse (91%) Elephant, Rabbit (87%) Mouse (83%).
Purification:	Immunoaffinity purified

Target Details

Target:	CCR4
Alternative Name:	CCR4 (CCR4 Products)
Background:	Name/Gene ID: CCR4 Subfamily: Chemokine Family: GPCR Synonyms: CCR4, C-C chemokine receptor type 4, CD194, CD194 antigen, C-C CKR-4, Chemr13, CKR-4, CC chemokine receptor 4, CC-CKR-4, CCR-4, HGCN:14099, C-c chemokine receptor 4, Chemokine (C-C) receptor 4, CKR4, CMKBR4, K5-5
Gene ID:	1233
UniProt:	P51679

Application Details

Application Notes:	Approved: ELISA (1:30000), Flo (1:12), IHC, IHC-P (5 µg/mL), WB (1:500) Usage: Immunohistochemistry: This antibody was validated for use in immunohistochemistry on a panel of 21 formalin-fixed, paraffin-embedded (FFPE) human tissues after heat induced antigen retrieval in pH 6.0 citrate buffer. After incubation with the primary antibody, slides were incubated with biotinylated secondary antibody, followed by alkaline phosphatase-streptavidin and chromogen. The stained slides were evaluated by a pathologist to confirm staining specificity. The optimal working concentration for this antibody was determined to be 5 µg/mL.
Comment:	Target Species of Antibody: Human
Restrictions:	For Research Use only

Handling

Format:	Liquid
Concentration:	Lot specific
Buffer:	10 mM KHPO4, 140 mM NaCl with 1 mg/mL BSA and 0.1 % sodium azide
Preservative:	Sodium azide
Precaution of Use:	This product contains Sodium azide: a POISONOUS AND HAZARDOUS SUBSTANCE which should be handled by trained staff only.

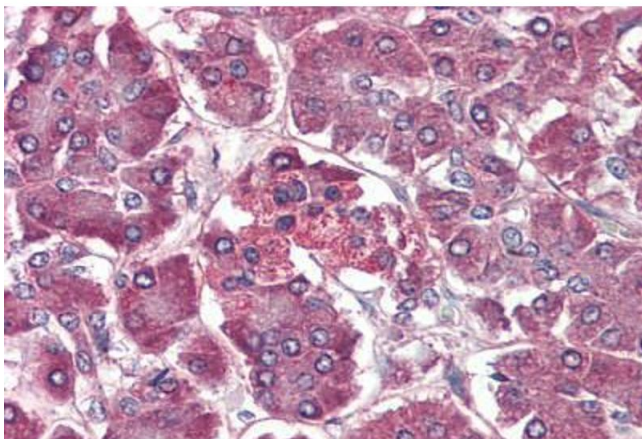
Handling

Handling Advice: Avoid freeze-thaw cycles.

Storage: -20 °C, -80 °C

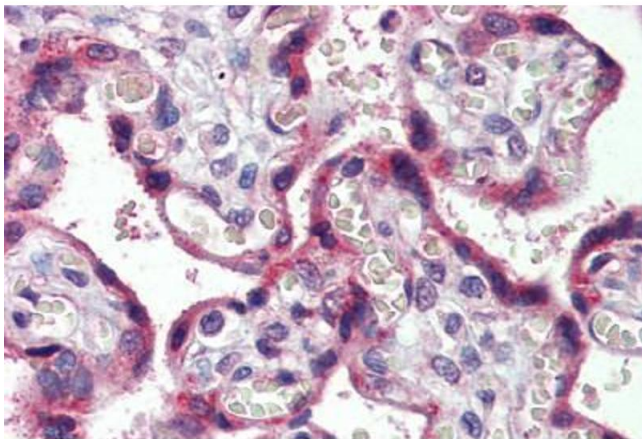
Storage Comment: Short term: -20°C
Long term: -70°C
Avoid freeze-thaw cycles.

Images



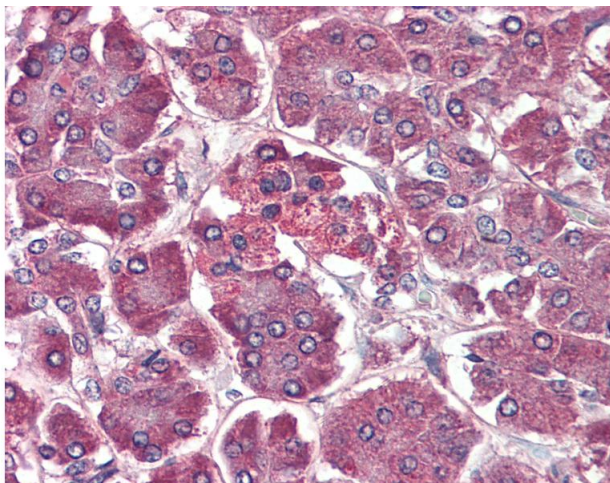
Immunohistochemistry (Formalin-fixed Paraffin-embedded Sections)

Image 1. Pancreas, Human: Formalin-Fixed, Paraffin-Embedded (FFPE)



Immunohistochemistry (Formalin-fixed Paraffin-embedded Sections)

Image 2. Placenta, Human: Formalin-Fixed, Paraffin-Embedded (FFPE)



Immunohistochemistry

Image 3. Anti-CCR4 antibody IHC of human pancreas. Immunohistochemistry of formalin-fixed, paraffin-embedded tissue after heat-induced antigen retrieval. Antibody concentration 5 ug/ml.