

Datasheet for ABIN490085  
**anti-TGFB3 antibody (C-Term)**[Go to Product page](#)

## 3 Images

## Overview

Quantity:	50 µL
Target:	TGFB3
Binding Specificity:	C-Term
Reactivity:	Human, Rat, Mouse
Host:	Rabbit
Clonality:	Polyclonal
Conjugate:	This TGFB3 antibody is un-conjugated
Application:	Western Blotting (WB), Immunohistochemistry (IHC), Immunoprecipitation (IP), Immunohistochemistry (Paraffin-embedded Sections) (IHC (p))

## Product Details

Brand:	IHC-plus™
Immunogen:	A synthetic peptide derived from the C-terminus of the precursor form of human TGF beta 3.  Type of Immunogen: Synthetic peptide
Isotype:	IgG
Specificity:	Recognizes human Transforming Growth Factor beta3 at ~47kD.
Purification:	Immunoaffinity purified

## Target Details

Target:	TGFB3
---------	-------

## Target Details

Alternative Name:	TGFB3 ( <a href="#">TGFB3 Products</a> )
Background:	Name/Gene ID: TGFB3 Family: TGF beta  Synonyms: TGFB3, ARVD, TGF Beta 3, TGF-beta-3, TGF-beta3
Gene ID:	7043
UniProt:	<a href="#">P10600</a>
Pathways:	<a href="#">Cell-Cell Junction Organization</a> , <a href="#">Production of Molecular Mediator of Immune Response</a> , <a href="#">Protein targeting to Nucleus</a>

## Application Details

Application Notes:	Approved: IHC, IHC-P (5 µg/mL), IP, WB  Usage: Immunohistochemistry: This antibody was validated for use in immunohistochemistry on a panel of 21 formalin-fixed, paraffin-embedded (FFPE) human tissues after heat induced antigen retrieval in pH 6.0 citrate buffer. After incubation with the primary antibody, slides were incubated with biotinylated secondary antibody, followed by alkaline phosphatase-streptavidin and chromogen. The stained slides were evaluated by a pathologist to confirm staining specificity. The optimal working concentration for this antibody was determined to be 5 µg/mL.
Comment:	Target Species of Antibody: Human
Restrictions:	For Research Use only

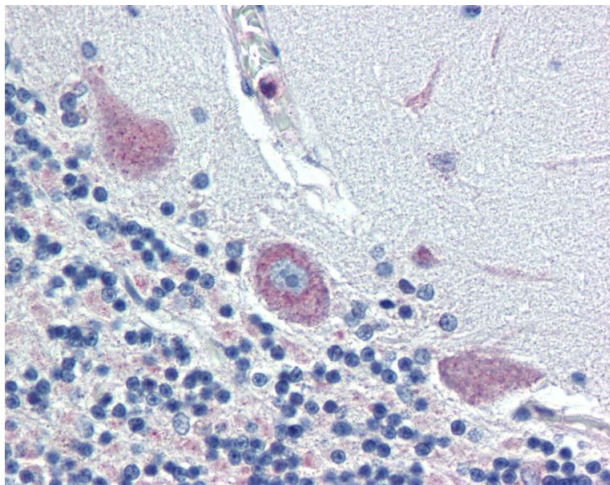
## Handling

Format:	Liquid
Concentration:	Lot specific
Buffer:	10 mM PBS, pH 7.4, BSA, 0.05 % sodium azide.
Preservative:	Sodium azide
Precaution of Use:	This product contains Sodium azide: a POISONOUS AND HAZARDOUS SUBSTANCE which should be handled by trained staff only.
Handling Advice:	avoid freeze thaw cycles.
Storage:	4 °C, -20 °C

## Handling

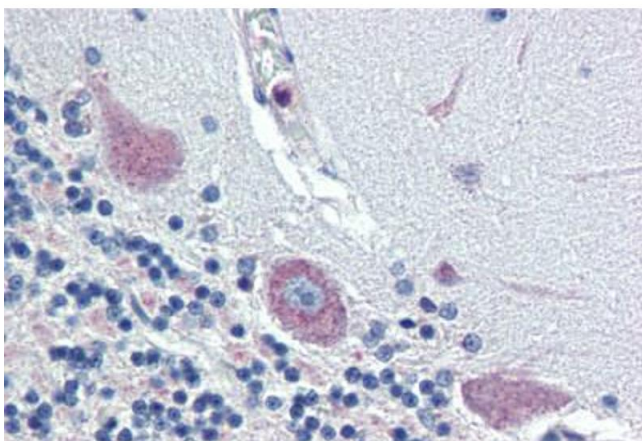
Storage Comment: Short term 4°C, long term aliquot and store at -20°C, avoid freeze-thaw cycles.

## Images



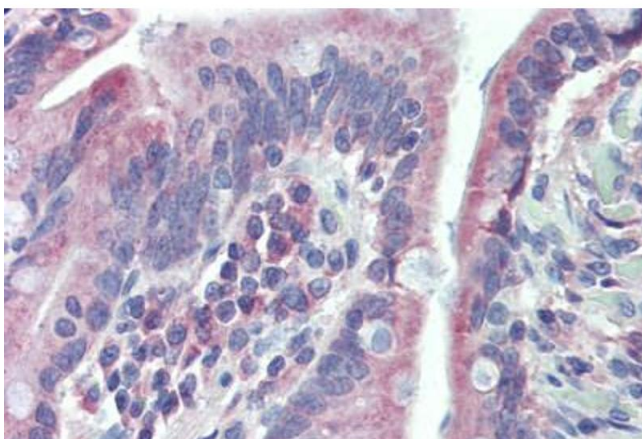
### Immunohistochemistry

**Image 1.** Anti-TGFB3 antibody IHC of human brain, cerebellum. Immunohistochemistry of formalin-fixed, paraffin-embedded tissue after heat-induced antigen retrieval. Antibody concentration 5 ug/ml.



### Immunohistochemistry (Formalin-fixed Paraffin-embedded Sections)

**Image 2.** Brain, cerebellum, Human: Formalin-Fixed, Paraffin-Embedded (FFPE)



### Immunohistochemistry (Formalin-fixed Paraffin-embedded Sections)

**Image 3.** Small intestine, Human: Formalin-Fixed, Paraffin-Embedded (FFPE)