

Datasheet for ABIN4903091

**anti-GPR77 antibody****2** Images[Go to Product page](#)

## Overview

Quantity:	100 µL
Target:	GPR77
Reactivity:	Human, Mouse, Rat
Host:	Rabbit
Clonality:	Polyclonal
Conjugate:	This GPR77 antibody is un-conjugated
Application:	Western Blotting (WB)

## Product Details

Immunogen:	Recombinant protein of human C5AR2.
Isotype:	IgG
Characteristics:	This gene encodes a G-protein coupled receptor 1 family member involved in the complement system of the innate immune response. Unlike classical G-protein coupled receptors, the encoded protein does not associate with intracellular G-proteins. It may instead modulate signal transduction through the beta-arrestin pathway, and may alternatively act as a decoy receptor. This gene may be involved in coronary artery disease and in the pathogenesis of sepsis. Alternative splicing results in multiple transcript variants.
Purification:	Affinity purification

## Target Details

Target:	GPR77
---------	-------

## Target Details

Alternative Name:	C5AR2 ( <a href="#">GPR77 Products</a> )
Gene ID:	27202
UniProt:	<a href="#">Q9P296</a>

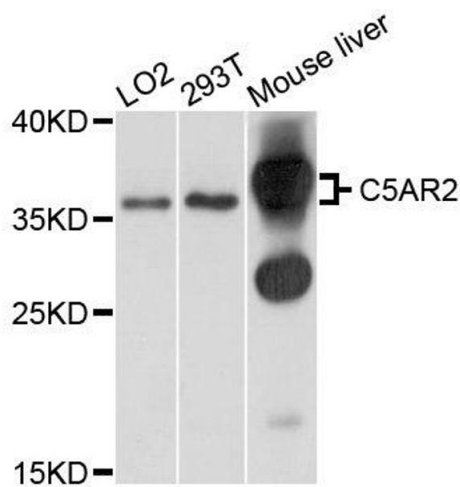
## Application Details

Application Notes:	WB 1:1000-1:2000
Restrictions:	For Research Use only

## Handling

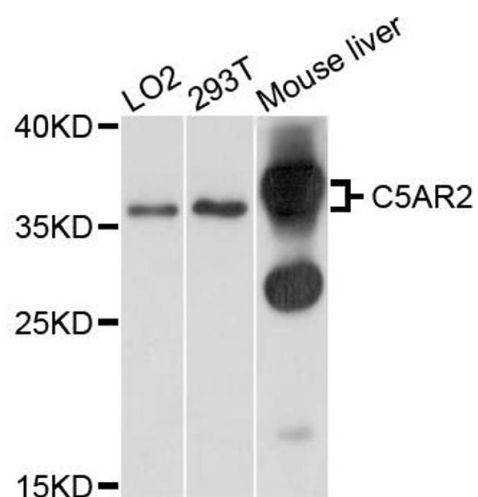
Format:	Liquid
Concentration:	1 mg/mL
Buffer:	PBS with 0.02 % sodium azide, 50 % glycerol, pH 7.4
Preservative:	Sodium azide
Precaution of Use:	This product contains Sodium azide: a POISONOUS AND HAZARDOUS SUBSTANCE which should be handled by trained staff only.
Handling Advice:	Avoid repeated freeze/thaw cycles.
Storage:	-20 °C
Storage Comment:	Store at -20°C.

## Images



### Western Blotting

**Image 1.** Western blot analysis of extracts of various cells, using C5AR2 antibody.



#### Western Blotting

**Image 2.** Western blot analysis of extracts of various cell lines, using C5AR2 antibody (ABIN4903091) at 1:1000 dilution. Secondary antibody: HRP Goat Anti-Rabbit IgG (H+L) at 1:10000 dilution. Lysates/proteins: 25ug per lane. Blocking buffer: 3% nonfat dry milk in TBST. Detection: ECL Basic Kit. Exposure time: 1s.