



[Go to Product page](#)

Datasheet for ABIN4903272

anti-CHL1 antibody

1 Image

Overview

Quantity:	100 µL
Target:	CHL1
Reactivity:	Human, Mouse, Rat
Host:	Rabbit
Clonality:	Polyclonal
Application:	Western Blotting (WB)

Product Details

Immunogen:	Recombinant protein of human CHL1.
Isotype:	IgG
Characteristics:	The protein encoded by this gene is a member of the L1 gene family of neural cell adhesion molecules. It is a neural recognition molecule that may be involved in signal transduction pathways. The deletion of one copy of this gene may be responsible for mental defects in patients with 3p- syndrome. This protein may also play a role in the growth of certain cancers. Alternate splicing results in both coding and non-coding variants. [provided by RefSeq, Nov 2011]
Purification:	Affinity purification

Target Details

Target:	CHL1
Alternative Name:	CHL1 (CHL1 Products)

Target Details

Gene ID: 10752

UniProt: [O00533](#)

Application Details

Application Notes: WB 1:200-1:2000

Restrictions: For Research Use only

Handling

Format: Liquid

Concentration: 1 mg/mL

Buffer: PBS with 0.02 % sodium azide, 50 % glycerol, pH 7.4

Preservative: Sodium azide

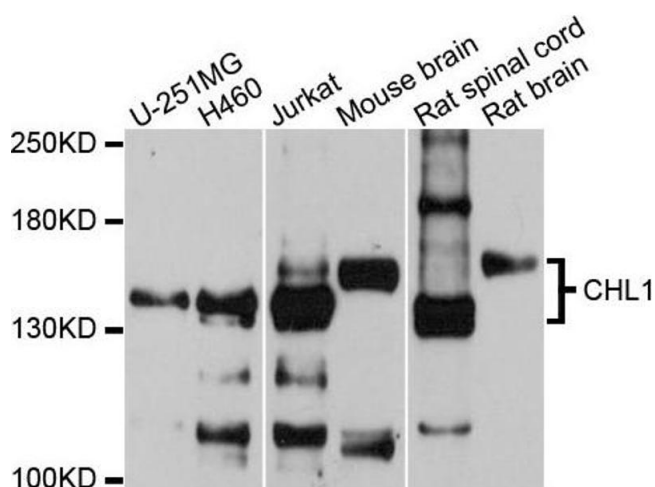
Precaution of Use: This product contains Sodium azide: a POISONOUS AND HAZARDOUS SUBSTANCE which should be handled by trained staff only.

Handling Advice: Avoid repeated freeze/thaw cycles.

Storage: -20 °C

Storage Comment: Store at -20°C.

Images



Western Blotting

Image 1. Western blot analysis of extracts of various cells, using CHL1 antibody.