



[Go to Product page](#)

Datasheet for ABIN4903282

anti-CHRNA2 antibody

2 Images

Overview

Quantity:	100 µL
Target:	CHRNA2
Reactivity:	Rat
Host:	Rabbit
Clonality:	Polyclonal
Conjugate:	This CHRNA2 antibody is un-conjugated
Application:	Western Blotting (WB)

Product Details

Immunogen:	Recombinant protein of human CHRNA2.
Isotype:	IgG
Characteristics:	Rabbit Polyclonal to CHRNA2.
Purification:	Affinity purification

Target Details

Target:	CHRNA2
Alternative Name:	CHRNA2 (CHRNA2 Products)
Gene ID:	1135
UniProt:	Q15822

Application Details

Application Notes: WB 1:500-1:2000

Restrictions: For Research Use only

Handling

Format: Liquid

Concentration: 1 mg/mL

Buffer: PBS with 0.02 % sodium azide, 50 % glycerol, pH 7.4

Preservative: Sodium azide

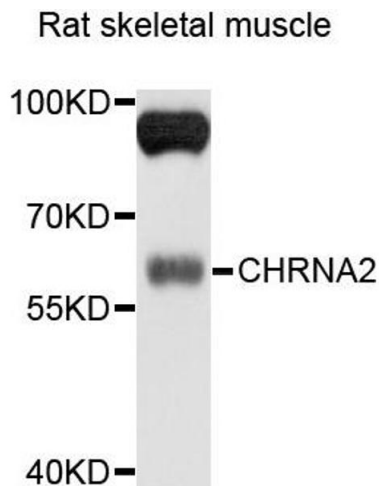
Precaution of Use: This product contains Sodium azide: a POISONOUS AND HAZARDOUS SUBSTANCE which should be handled by trained staff only.

Handling Advice: Avoid repeated freeze/thaw cycles.

Storage: -20 °C

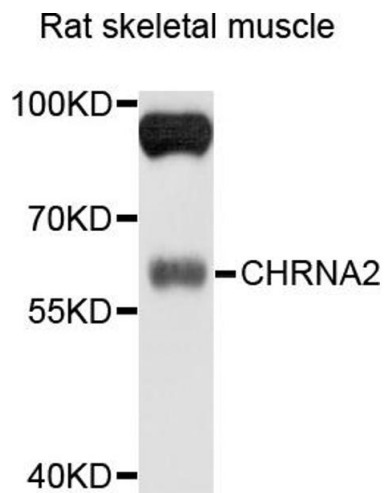
Storage Comment: Store at -20°C.

Images



Western Blotting

Image 1. Western blot analysis of extracts of rat skeletal muscle cells, using CHRNA2 antibody.



Western Blotting

Image 2. Western blot analysis of extracts of rat skeletal muscle, using CHRNA2 antibody (ABIN4903282) at 1:1000 dilution. Secondary antibody: HRP Goat Anti-Rabbit IgG (H+L) at 1:10000 dilution. Lysates/proteins: 25ug per lane. Blocking buffer: 3% nonfat dry milk in TBST. Detection: ECL Basic Kit. Exposure time: 10s.