

Datasheet for ABIN4903283
anti-CHRNA3 antibody



[Go to Product page](#)

2 Images

Overview

Quantity:	100 µL
Target:	CHRNA3
Reactivity:	Human, Mouse, Rat
Host:	Rabbit
Clonality:	Polyclonal
Conjugate:	This CHRNA3 antibody is un-conjugated
Application:	Western Blotting (WB), Immunohistochemistry (IHC)

Product Details

Immunogen:	Recombinant protein of human CHRNA3.
Isotype:	IgG
Characteristics:	<p>This locus encodes a member of the nicotinic acetylcholine receptor family of proteins. Members of this family of proteins form pentameric complexes comprised of both alpha and beta subunits. This locus encodes an alpha-type subunit, as it contains characteristic adjacent cysteine residues. The encoded protein is a ligand-gated ion channel that likely plays a role in neurotransmission. Polymorphisms in this gene have been associated with an increased risk of smoking initiation and an increased susceptibility to lung cancer. Alternatively spliced transcript variants have been described.</p>
Purification:	Affinity purification

Target Details

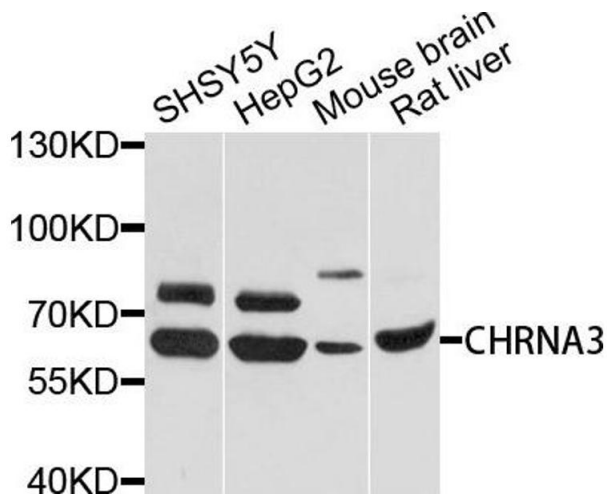
Target:	CHRNA3
Alternative Name:	CHRNA3 (CHRNA3 Products)
Gene ID:	1136
UniProt:	P32297
Pathways:	Synaptic Membrane

Application Details

Application Notes:	WB 1:500-1:2000 , IHC 1:50-1:200
Restrictions:	For Research Use only

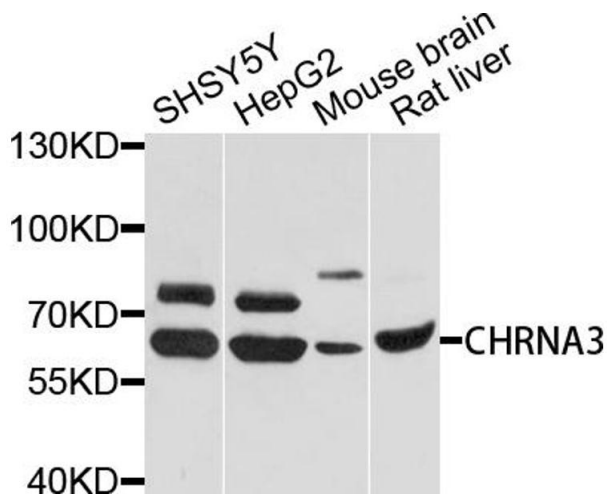
Handling

Format:	Liquid
Concentration:	1 mg/mL
Buffer:	PBS with 0.02 % sodium azide, 50 % glycerol, pH 7.4
Preservative:	Sodium azide
Precaution of Use:	This product contains Sodium azide: a POISONOUS AND HAZARDOUS SUBSTANCE which should be handled by trained staff only.
Handling Advice:	Avoid repeated freeze/thaw cycles.
Storage:	-20 °C
Storage Comment:	Store at -20°C.



Western Blotting

Image 1. Western blot analysis of extracts of various cells, using CHRNA3 antibody.



Western Blotting

Image 2. Western blot analysis of extracts of various cell lines, using CHRNA3 antibody (ABIN4903283) at 1:1000 dilution. Secondary antibody: HRP Goat Anti-Rabbit IgG (H+L) at 1:10000 dilution. Lysates/proteins: 25ug per lane. Blocking buffer: 3% nonfat dry milk in TBST. Detection: ECL Basic Kit. Exposure time: 10s.