



Datasheet for ABIN4903287  
**anti-CHRN2 antibody**



[Go to Product page](#)

2 Images

Overview

Quantity:	100 µL
Target:	CHRN2
Reactivity:	Human, Mouse
Host:	Rabbit
Clonality:	Polyclonal
Conjugate:	This CHRN2 antibody is un-conjugated
Application:	Western Blotting (WB), Immunohistochemistry (IHC)

Product Details

Immunogen:	Recombinant protein of human CHRN2.
Isotype:	IgG
Characteristics:	Rabbit Polyclonal to CHRN2.
Purification:	Affinity purification

Target Details

Target:	CHRN2
Alternative Name:	CHRN2 ( <a href="#">CHRN2 Products</a> )
Gene ID:	1141
UniProt:	<a href="#">P17787</a>
Pathways:	<a href="#">Sensory Perception of Sound, Feeding Behaviour</a>

## Application Details

---

Application Notes: WB 1:500-1:2000 , IHC 1:50-1:100

Restrictions: For Research Use only

## Handling

---

Format: Liquid

Concentration: 1 mg/mL

Buffer: PBS with 0.02 % sodium azide, 50 % glycerol, pH 7.4

Preservative: Sodium azide

Precaution of Use: This product contains Sodium azide: a POISONOUS AND HAZARDOUS SUBSTANCE which should be handled by trained staff only.

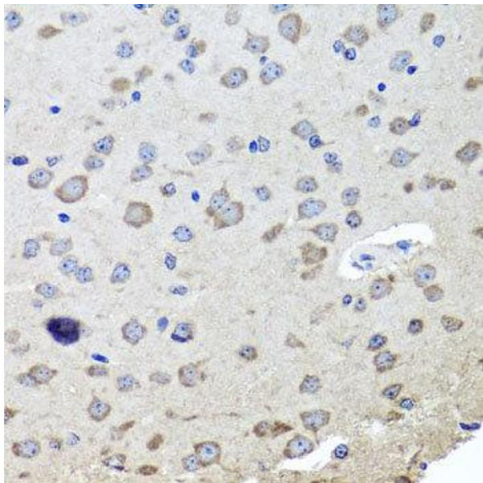
Handling Advice: Avoid repeated freeze/thaw cycles.

Storage: -20 °C

Storage Comment: Store at -20°C.

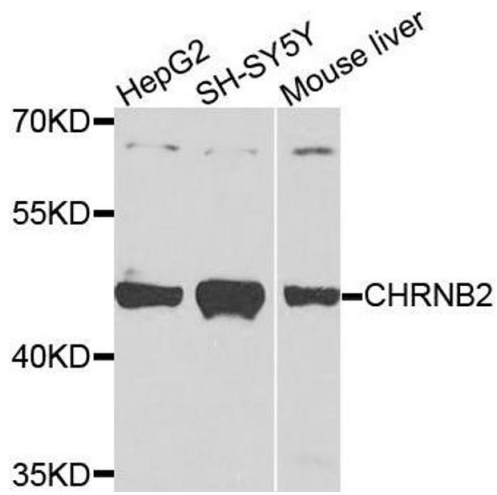
## Images

---



### Immunohistochemistry

**Image 1.** Immunohistochemistry of paraffin-embedded mouse brain using CHRN2 antibody at dilution of 1:100 (x40 lens).



### Western Blotting

**Image 2.** Western blot analysis of extracts of various cells, using CHRN2 antibody.