

Datasheet for ABIN4903312
anti-CLEC2D antibody



[Go to Product page](#)

1 Image

Overview

Quantity:	100 µL
Target:	CLEC2D
Reactivity:	Human, Mouse
Host:	Rabbit
Clonality:	Polyclonal
Conjugate:	This CLEC2D antibody is un-conjugated
Application:	Western Blotting (WB)

Product Details

Immunogen:	Recombinant protein of human CLEC2D.
Isotype:	IgG
Characteristics:	Rabbit Polyclonal to CLEC2D.
Purification:	Affinity purification

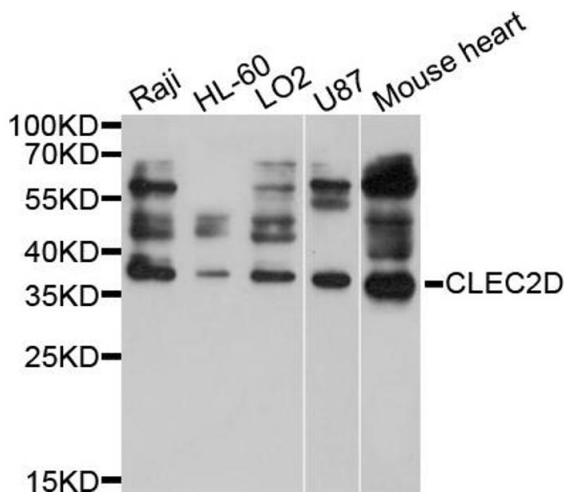
Target Details

Target:	CLEC2D
Alternative Name:	CLEC2D (CLEC2D Products)
Gene ID:	29121
UniProt:	Q9UHP7
Pathways:	Regulation of Leukocyte Mediated Immunity

Application Details

Application Notes:	Optimal working dilution should be determined by the investigator.
Restrictions:	For Research Use only
Handling	
Format:	Liquid
Concentration:	1 mg/mL
Buffer:	PBS with 0.02 % sodium azide, 50 % glycerol, pH 7.4
Preservative:	Sodium azide
Precaution of Use:	This product contains Sodium azide: a POISONOUS AND HAZARDOUS SUBSTANCE which should be handled by trained staff only.
Handling Advice:	Avoid repeated freeze/thaw cycles.
Storage:	-20 °C
Storage Comment:	Store at -20°C.

Validation report #102909 for Western Blotting (WB)



Western Blotting

Image 1. Western blot analysis of extracts of various cell lines, using CLEC2D antibody (ABIN4903312) at 1:1000 dilution. Secondary antibody: HRP Goat Anti-Rabbit IgG (H+L) at 1:10000 dilution. Lysates/proteins: 25ug per lane. Blocking buffer: 3% nonfat dry milk in TBST. Detection: ECL Basic Kit. Exposure time: 30s.