



[Go to Product page](#)

Datasheet for ABIN4903748

## anti-GDF10 antibody

### 2 Images

#### Overview

Quantity:	100 µL
Target:	GDF10
Reactivity:	Human, Mouse, Rat
Host:	Rabbit
Clonality:	Polyclonal
Conjugate:	This GDF10 antibody is un-conjugated
Application:	Western Blotting (WB)

#### Product Details

Immunogen:	Recombinant protein of human GDF10.
Isotype:	IgG
Characteristics:	The protein encoded by this gene is a member of the bone morphogenetic protein (BMP) family and the TGF-beta superfamily. This group of proteins is characterized by a polybasic proteolytic processing site which is cleaved to produce a mature protein containing seven conserved cysteine residues. The members of this family are regulators of cell growth and differentiation in both embryonic and adult tissues. Studies in mice suggest that the protein encoded by this gene plays a role in skeletal morphogenesis.
Purification:	Affinity purification

#### Target Details

Target:	GDF10
---------	-------

## Target Details

Alternative Name: GDF10 ([GDF10 Products](#))

Gene ID: 2662

UniProt: [P55107](#)

## Application Details

Application Notes: WB 1:1000-1:2000

Restrictions: For Research Use only

## Handling

Format: Liquid

Concentration: 1 mg/mL

Buffer: PBS with 0.02 % sodium azide, 50 % glycerol, pH 7.4

Preservative: Sodium azide

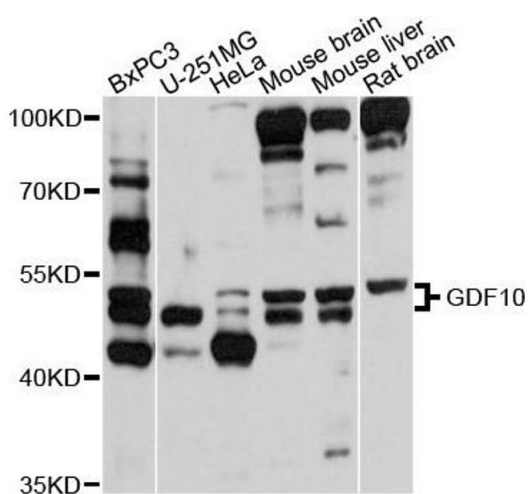
Precaution of Use: This product contains Sodium azide: a POISONOUS AND HAZARDOUS SUBSTANCE which should be handled by trained staff only.

Handling Advice: Avoid repeated freeze/thaw cycles.

Storage: -20 °C

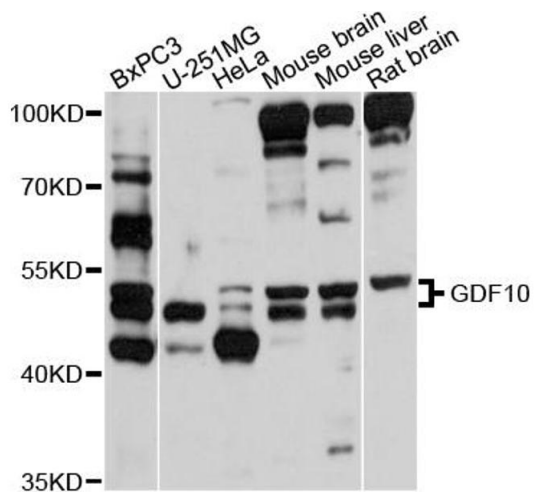
Storage Comment: Store at -20°C.

## Images



### Western Blotting

**Image 1.** Western blot analysis of extracts of various cells, using GDF10 antibody.



### Western Blotting

**Image 2.** Western blot analysis of extracts of various cell lines, using GDF10 antibody (ABIN4903748) at 1:1000 dilution. Secondary antibody: HRP Goat Anti-Rabbit IgG (H+L) at 1:10000 dilution. Lysates/proteins: 25ug per lane. Blocking buffer: 3% nonfat dry milk in TBST. Detection: ECL Basic Kit. Exposure time: 10s.