

Datasheet for ABIN4903870

anti-Hemoglobin Subunit beta antibody[Go to Product page](#)**2** Images

Overview

Quantity:	100 µL
Target:	Hemoglobin Subunit beta (HBB)
Reactivity:	Human, Mouse, Rat
Host:	Rabbit
Clonality:	Polyclonal
Conjugate:	This Hemoglobin Subunit beta antibody is un-conjugated
Application:	Western Blotting (WB), Immunohistochemistry (IHC), Flow Cytometry (FACS)

Product Details

Immunogen:	Recombinant protein of human HBB.
Isotype:	IgG
Characteristics:	<p>Hemoglobin (Hgb) is coupled to four iron-binding, methene-linked tetrapyrrole rings (heme). The α (16p13.3, 5'-Ω-pseudoz-pseudo α2-pseudo α1-α2-α1-1-3') and (11p15.5) globin loci determine the basic hemoglobin structure. The globin portion of hemoglobin consists of two α chains and two chains arranged in pairs forming a tetramer. Each of the four globin chains covalently associates with a heme group. The bonds between α and chains are weaker than between similar globin chains, thereby forming a cleavage plane that is important for oxygen binding and release. High affinity for oxygen occurs upon relaxation of the α1-2 cleavage plane. When the two α1-2 interfaces are closely bound, hemoglobin has a low affinity for oxygen. Hb A, which contains two α chains plus two chains, comprises 97 % of total circulating hemoglobin. The remaining 3 % of total circulating hemoglobin is comprised of Hb A-2, which consists of two α chains plus two chains, and fetal hemoglobin (Hb F), which consists of two α chains together</p>

Product Details

with two © chains.

Purification: Affinity purification

Target Details

Target: Hemoglobin Subunit beta (HBB)

Alternative Name: HBB ([HBB Products](#))

Target Type: Viral Protein

Gene ID: 3043

UniProt: [P68871](#)

Application Details

Application Notes: WB 1:100-1:200 , IHC 1:50-1:100 , FC 1:20-1:50

Restrictions: For Research Use only

Handling

Format: Liquid

Concentration: 1 mg/mL

Buffer: PBS with 0.02 % sodium azide, 50 % glycerol, pH 7.4

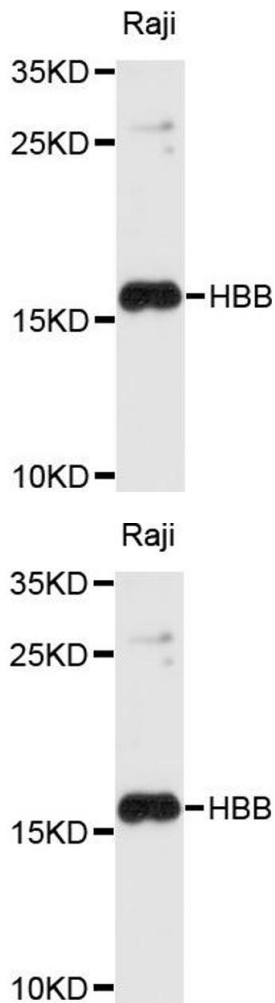
Preservative: Sodium azide

Precaution of Use: This product contains Sodium azide: a POISONOUS AND HAZARDOUS SUBSTANCE which should be handled by trained staff only.

Handling Advice: Avoid repeated freeze/thaw cycles.

Storage: -20 °C

Storage Comment: Store at -20°C.



Western Blotting

Image 1. Western blot analysis of extracts of Raji cells, using HBB antibody.

Western Blotting

Image 2. Western blot analysis of extracts of Raji cells, using HBB antibody (ABIN4903870) at 1:1000 dilution. Secondary antibody: HRP Goat Anti-Rabbit IgG (H+L) at 1:10000 dilution. Lysates/proteins: 25ug per lane. Blocking buffer: 3% nonfat dry milk in TBST. Detection: ECL Basic Kit. Exposure time: 10s.