

Datasheet for ABIN4904030

anti-IL12RB2 antibody**2** Images[Go to Product page](#)

Overview

Quantity:	100 µL
Target:	IL12RB2
Reactivity:	Mouse, Rat
Host:	Rabbit
Clonality:	Polyclonal
Conjugate:	This IL12RB2 antibody is un-conjugated
Application:	Western Blotting (WB)

Product Details

Immunogen:	Recombinant protein of human IL12RB2.
Isotype:	IgG
Characteristics:	<p>The protein encoded by this gene is a type I transmembrane protein identified as a subunit of the interleukin 12 receptor complex. The coexpression of this and IL12RB1 proteins was shown to lead to the formation of high-affinity IL12 binding sites and reconstitution of IL12 dependent signaling. The expression of this gene is up-regulated by interferon gamma in Th1 cells, and plays a role in Th1 cell differentiation. The up-regulation of this gene is found to be associated with a number of infectious diseases, such as Crohn's disease and leprosy, which is thought to contribute to the inflammatory response and host defense. Several transcript variants encoding different isoforms and non-protein coding transcripts have been found for this gene.</p>
Purification:	Affinity purification

Target Details

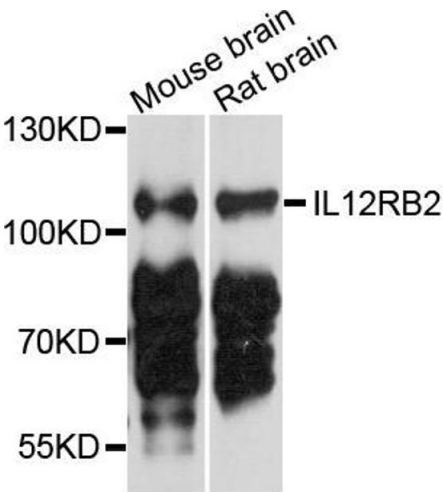
Target:	IL12RB2
Alternative Name:	IL12RB2 (IL12RB2 Products)
Gene ID:	3595
UniProt:	Q99665
Pathways:	JAK-STAT Signaling

Application Details

Application Notes:	WB 1:1000-1:2000
Restrictions:	For Research Use only

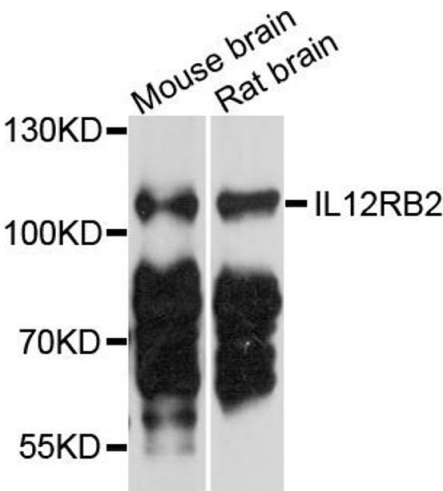
Handling

Format:	Liquid
Concentration:	1 mg/mL
Buffer:	PBS with 0.02 % sodium azide, 50 % glycerol, pH 7.4
Preservative:	Sodium azide
Precaution of Use:	This product contains Sodium azide: a POISONOUS AND HAZARDOUS SUBSTANCE which should be handled by trained staff only.
Handling Advice:	Avoid repeated freeze/thaw cycles.
Storage:	-20 °C
Storage Comment:	Store at -20°C.



Western Blotting

Image 1. Western blot analysis of extract of MCF7 and HeLa cells, using IL12RB2 antibody.



Western Blotting

Image 2. Western blot analysis of extracts of various cell lines, using IL12RB2 antibody (ABIN4904030) at 1:1000 dilution. Secondary antibody: HRP Goat Anti-Rabbit IgG (H+L) at 1:10000 dilution. Lysates/proteins: 25ug per lane. Blocking buffer: 3% nonfat dry milk in TBST. Detection: ECL Basic Kit. Exposure time: 5s.