

Datasheet for ABIN4904158

## anti-KIR3DL2 antibody

### 2 Images



[Go to Product page](#)

### Overview

Quantity:	100 µL
Target:	KIR3DL2
Reactivity:	Human, Mouse, Rat
Host:	Rabbit
Clonality:	Polyclonal
Conjugate:	This KIR3DL2 antibody is un-conjugated
Application:	Western Blotting (WB)

### Product Details

Immunogen:	Recombinant protein of human KIR3DL2.
Isotype:	IgG
Characteristics:	Rabbit Polyclonal to KIR3DL2.
Purification:	Affinity purification

### Target Details

Target:	KIR3DL2
Alternative Name:	KIR3DL2 ( <a href="#">KIR3DL2 Products</a> )
Gene ID:	3812
UniProt:	<a href="#">P43630</a>

## Application Details

Application Notes: WB 1:500-1:2000

Restrictions: For Research Use only

## Handling

Format: Liquid

Concentration: 1 mg/mL

Buffer: PBS with 0.02 % sodium azide, 50 % glycerol, pH 7.4

Preservative: Sodium azide

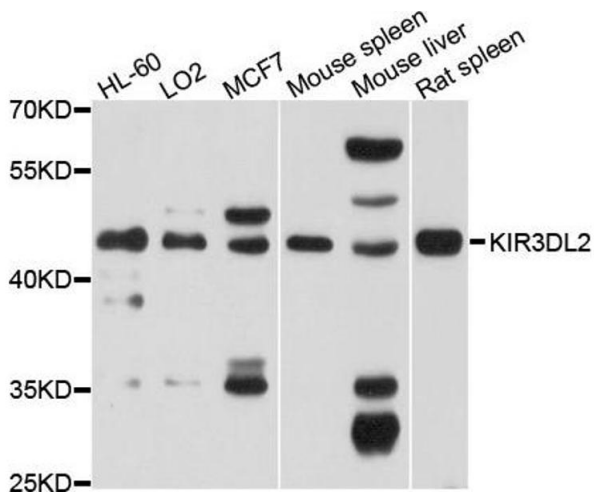
Precaution of Use: This product contains Sodium azide: a POISONOUS AND HAZARDOUS SUBSTANCE which should be handled by trained staff only.

Handling Advice: Avoid repeated freeze/thaw cycles.

Storage: -20 °C

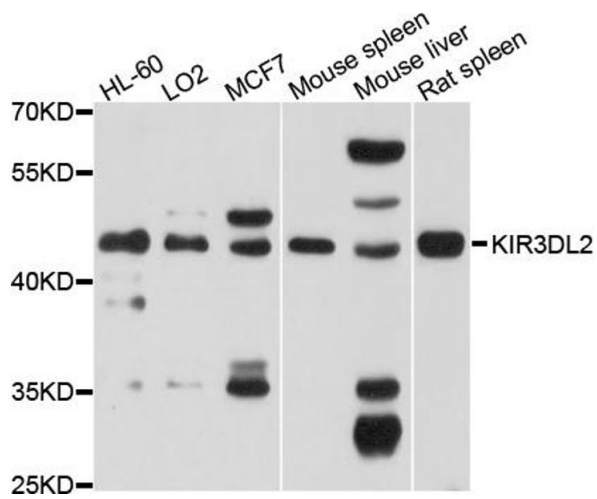
Storage Comment: Store at -20°C.

## Images



### Western Blotting

**Image 1.** Western blot analysis of extracts of various cells, using KIR3DL2 antibody.



### Western Blotting

**Image 2.** Western blot analysis of extracts of various cell lines, using KIR3DL2 antibody (ABIN4904158) at 1:1000 dilution. Secondary antibody: HRP Goat Anti-Rabbit IgG (H+L) at 1:10000 dilution. Lysates/proteins: 25ug per lane. Blocking buffer: 3% nonfat dry milk in TBST. Detection: ECL Basic Kit. Exposure time: 60s.