

Datasheet for ABIN4904285

anti-MAN1A1 antibody

1 Image



[Go to Product page](#)

Overview

Quantity:	100 µL
Target:	MAN1A1
Reactivity:	Human, Mouse, Rat
Host:	Rabbit
Clonality:	Polyclonal
Conjugate:	This MAN1A1 antibody is un-conjugated
Application:	Western Blotting (WB)

Product Details

Immunogen:	Recombinant protein of human MAN1A1.
Isotype:	IgG
Characteristics:	Rabbit Polyclonal to MAN1A1.
Purification:	Affinity purification

Target Details

Target:	MAN1A1
Alternative Name:	MAN1A1 (MAN1A1 Products)
Gene ID:	4121
UniProt:	P33908

Application Details

Application Notes: Optimal working dilution should be determined by the investigator.

Restrictions: For Research Use only

Handling

Format: Liquid

Concentration: 1 mg/mL

Buffer: PBS with 0.02 % sodium azide, 50 % glycerol, pH 7.4

Preservative: Sodium azide

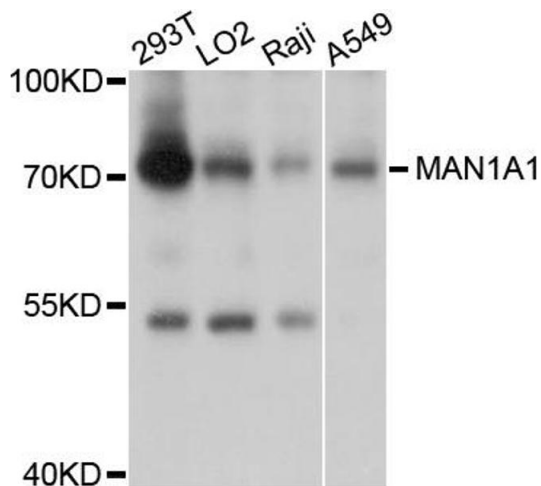
Precaution of Use: This product contains Sodium azide: a POISONOUS AND HAZARDOUS SUBSTANCE which should be handled by trained staff only.

Handling Advice: Avoid repeated freeze/thaw cycles.

Storage: -20 °C

Storage Comment: Store at -20°C.

Images



Western Blotting

Image 1. Western blot analysis of extracts of various cell lines, using MAN1A1 antibody (ABIN4904285) at 1:1000 dilution. Secondary antibody: HRP Goat Anti-Rabbit IgG (H+L) at 1:10000 dilution. Lysates/proteins: 25ug per lane. Blocking buffer: 3% nonfat dry milk in TBST. Detection: ECL Basic Kit. Exposure time: 1s.