

Datasheet for ABIN4904325

anti-MCL-1 antibody

7 Images

[Go to Product page](#)

Overview

Quantity:	100 µL
Target:	MCL-1 (MCL1)
Reactivity:	Human, Mouse, Rat
Host:	Rabbit
Clonality:	Monoclonal
Application:	Western Blotting (WB), Immunohistochemistry (IHC), Immunofluorescence (IF), Flow Cytometry (FACS), Immunocytochemistry (ICC), Immunoprecipitation (IP)

Product Details

Immunogen:	Recombinant protein of human MCL1.
Isotype:	IgG
Characteristics:	This gene encodes an anti-apoptotic protein, which is a member of the Bcl-2 family. Alternative splicing results in multiple transcript variants. The longest gene product (isoform 1) enhances cell survival by inhibiting apoptosis while the alternatively spliced shorter gene products (isoform 2 and isoform 3) promote apoptosis and are death-inducing.
Purification:	Affinity purification

Target Details

Target:	MCL-1 (MCL1)
Alternative Name:	MCL1 (MCL1 Products)
Gene ID:	4170

Target Details

UniProt: [Q07820](#)

Pathways: [MAPK Signaling](#)

Application Details

Application Notes: WB 1:500-1:1000 , IHC 1:50-1:200 , ICC 1:50-1:200 , IF 1:50-1:100 , IP 1:20-1:50 , FC 1:20-1:50

Restrictions: For Research Use only

Handling

Format: Liquid

Concentration: 1 mg/mL

Buffer: PBS with 0.02 % sodium azide, 50 % glycerol, pH 7.4

Preservative: Sodium azide

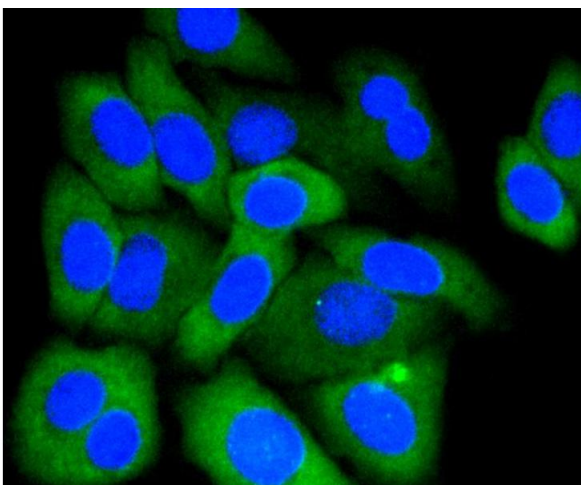
Precaution of Use: This product contains Sodium azide: a POISONOUS AND HAZARDOUS SUBSTANCE which should be handled by trained staff only.

Handling Advice: Avoid repeated freeze/thaw cycles.

Storage: -20 °C

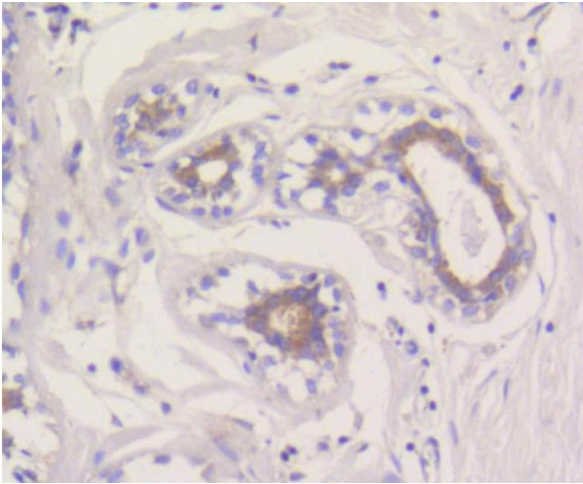
Storage Comment: Store at -20°C.

Images



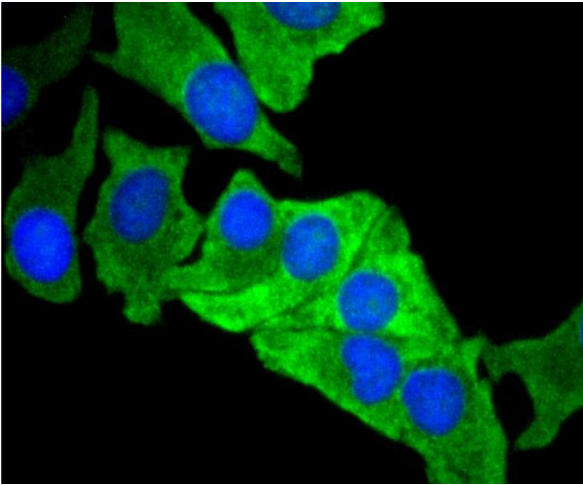
Immunofluorescence

Image 1. Immunofluorescence analysis of HepG2 cells using MCL1 antibody (ABIN4904325).



Immunohistochemistry

Image 2. Immunohistochemistry of paraffin-embedded human breast using MCL1 antibody (ABIN4904325) at dilution of 1:100 (40x lens).



Immunofluorescence

Image 3. Immunofluorescence analysis of BT-20 cells using MCL1 antibody (ABIN4904325).

Please check the [product details page](#) for more images. Overall 7 images are available for ABIN4904325.