

Datasheet for ABIN4904702

**anti-Protocadherin gamma Subfamily C, 3 (PCDHGC3)
antibody**[Go to Product page](#)**2** Images

Overview

Quantity:	100 µL
Target:	Protocadherin gamma Subfamily C, 3 (PCDHGC3)
Reactivity:	Human, Mouse, Rat
Host:	Rabbit
Clonality:	Polyclonal
Conjugate:	Un-conjugated
Application:	Western Blotting (WB)

Product Details

Immunogen:	Recombinant protein of human PCDHGC3.
Isotype:	IgG
Characteristics:	<p>This gene is a member of the protocadherin gamma gene cluster, one of three related clusters tandemly linked on chromosome five. These gene clusters have an immunoglobulin-like organization, suggesting that a novel mechanism may be involved in their regulation and expression. The gamma gene cluster includes 22 genes divided into 3 subfamilies. Subfamily A contains 12 genes, subfamily B contains 7 genes and 2 pseudogenes, and the more distantly related subfamily C contains 3 genes. The tandem array of 22 large, variable region exons are followed by a constant region, containing 3 exons shared by all genes in the cluster. Each variable region exon encodes the extracellular region, which includes 6 cadherin ectodomains and a transmembrane region. The constant region exons encode the common cytoplasmic region. These neural cadherin-like cell adhesion proteins most likely play a critical role in the establishment and function of specific cell-cell connections in the brain. Alternative splicing has</p>

Product Details

been described for the gamma cluster genes.

Purification: Affinity purification

Target Details

Target: Protocadherin gamma Subfamily C, 3 (PCDHGC3)

Alternative Name: PCDHGC3 ([PCDHGC3 Products](#))

Gene ID: 5098

UniProt: [Q9UN70](#)

Application Details

Application Notes: WB 1:500-1:2000

Restrictions: For Research Use only

Handling

Format: Liquid

Concentration: 1 mg/mL

Buffer: PBS with 0.02 % sodium azide, 50 % glycerol, pH 7.4

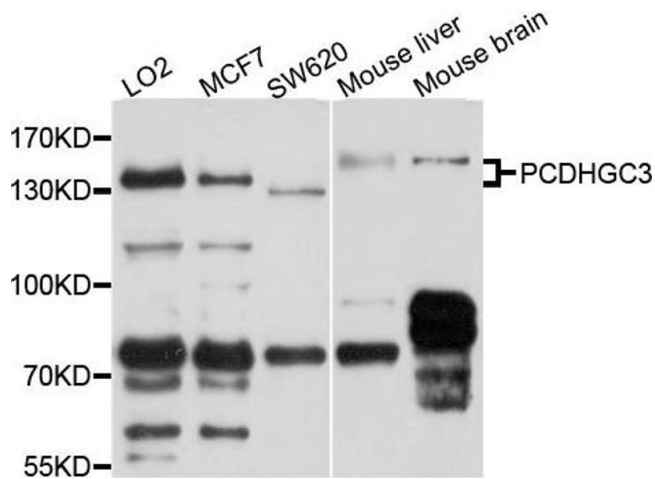
Preservative: Sodium azide

Precaution of Use: This product contains Sodium azide: a POISONOUS AND HAZARDOUS SUBSTANCE which should be handled by trained staff only.

Handling Advice: Avoid repeated freeze/thaw cycles.

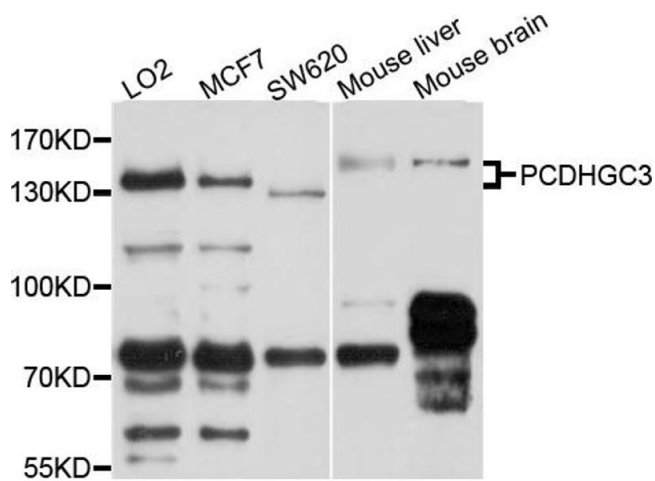
Storage: -20 °C

Storage Comment: Store at -20°C.



Western Blotting

Image 1. Western blot analysis of extract of various cells, using PCDHGC3 antibody.



Western Blotting

Image 2. Western blot analysis of extracts of various cell lines, using PCDHGC3 antibody (ABIN4904702) at 1:1000 dilution. Secondary antibody: HRP Goat Anti-Rabbit IgG (H+L) at 1:10000 dilution. Lysates/proteins: 25ug per lane. Blocking buffer: 3% nonfat dry milk in TBST. Detection: ECL Basic Kit. Exposure time: 20s.