

Datasheet for ABIN4904711

anti-PDE4B antibody**2** Images[Go to Product page](#)

Overview

Quantity:	100 µL
Target:	PDE4B
Reactivity:	Human, Mouse
Host:	Rabbit
Clonality:	Polyclonal
Conjugate:	This PDE4B antibody is un-conjugated
Application:	Western Blotting (WB)

Product Details

Immunogen:	Recombinant protein of human PDE4B.
Isotype:	IgG
Characteristics:	This gene is a member of the type IV, cyclic AMP (cAMP)-specific, cyclic nucleotide phosphodiesterase (PDE) family. The encoded protein regulates the cellular concentrations of cyclic nucleotides and thereby play a role in signal transduction. Altered activity of this protein has been associated with schizophrenia and bipolar affective disorder. Alternative splicing and the use of alternative promoters results in multiple transcript variants encoding different isoforms. [provided by RefSeq, Jul 2014]
Purification:	Affinity purification

Target Details

Target:	PDE4B
---------	-------

Target Details

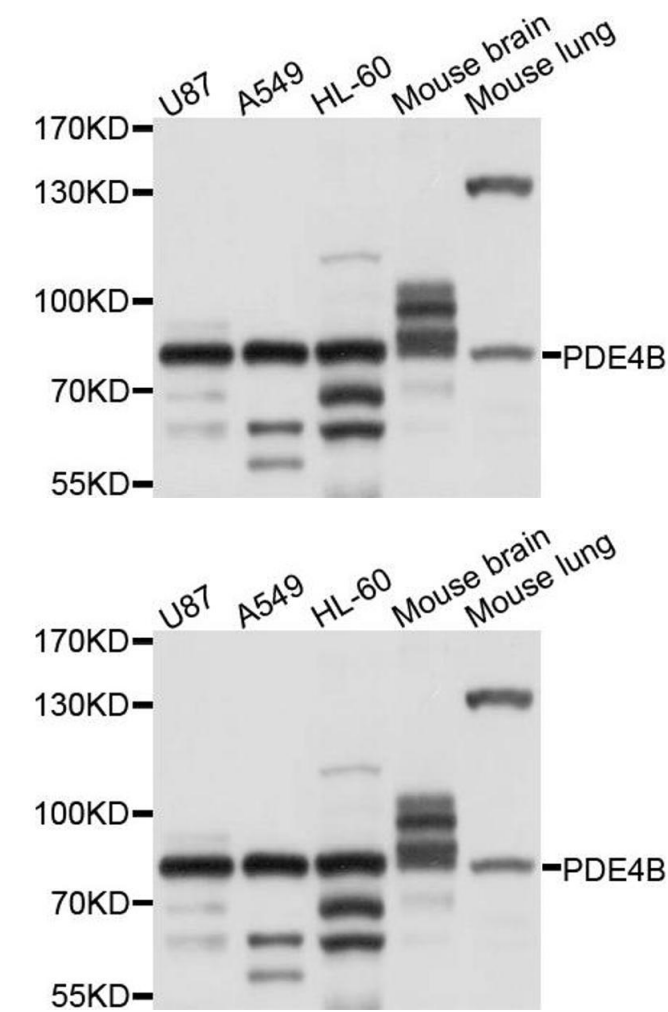
Alternative Name:	PDE4B (PDE4B Products)
Gene ID:	5142
UniProt:	Q07343
Pathways:	Cellular Response to Molecule of Bacterial Origin , cAMP Metabolic Process , Myometrial Relaxation and Contraction

Application Details

Application Notes:	WB 1:1000-1:3000
Restrictions:	For Research Use only

Handling

Format:	Liquid
Concentration:	1 mg/mL
Buffer:	PBS with 0.02 % sodium azide, 50 % glycerol, pH 7.4
Preservative:	Sodium azide
Precaution of Use:	This product contains Sodium azide: a POISONOUS AND HAZARDOUS SUBSTANCE which should be handled by trained staff only.
Handling Advice:	Avoid repeated freeze/thaw cycles.
Storage:	-20 °C
Storage Comment:	Store at -20°C.



Western Blotting

Image 1. Western blot analysis of extracts of various cells, using PDE4B antibody.

Western Blotting

Image 2. Western blot analysis of extracts of various cell lines, using PDE4B antibody (ABIN4904711) at 1:1000 dilution. Secondary antibody: HRP Goat Anti-Rabbit IgG (H+L) at 1:10000 dilution. Lysates/proteins: 25ug per lane. Blocking buffer: 3% nonfat dry milk in TBST. Detection: ECL Basic Kit. Exposure time: 1s.