



Datasheet for ABIN4904772 anti-PKC alpha antibody



[Go to Product page](#)

8 Images

Overview

Quantity:	100 µL
Target:	PKC alpha (PKCa)
Reactivity:	Human, Mouse, Rat
Host:	Rabbit
Clonality:	Monoclonal
Conjugate:	This PKC alpha antibody is un-conjugated
Application:	Western Blotting (WB), Immunohistochemistry (IHC), Immunoprecipitation (IP), Flow Cytometry (FACS), Immunofluorescence (IF), Immunocytochemistry (ICC)

Product Details

Immunogen:	Recombinant protein of human PRKCA.
Isotype:	IgG
Characteristics:	<p>Protein kinase C (PKC) is a family of serine- and threonine-specific protein kinases that can be activated by calcium and the second messenger diacylglycerol. PKC family members phosphorylate a wide variety of protein targets and are known to be involved in diverse cellular signaling pathways. PKC family members also serve as major receptors for phorbol esters, a class of tumor promoters. Each member of the PKC family has a specific expression profile and is believed to play a distinct role in cells. The protein encoded by this gene is one of the PKC family members. This kinase has been reported to play roles in many different cellular processes, such as cell adhesion, cell transformation, cell cycle checkpoint, and cell volume control. Knockout studies in mice suggest that this kinase may be a fundamental regulator of cardiac contractility and Ca(2+) handling in myocytes.</p>

Product Details

Purification: Affinity purification

Target Details

Target: PKC alpha (PKCa)

Alternative Name: PKC alpha ([PKCa Products](#))

Gene ID: 5578

UniProt: [P17252](#)

Pathways: [WNT Signaling](#), [TCR Signaling](#), [EGFR Signaling Pathway](#), [Neurotrophin Signaling Pathway](#), [Thyroid Hormone Synthesis](#), [cAMP Metabolic Process](#), [Myometrial Relaxation and Contraction](#), [Cell-Cell Junction Organization](#), [Regulation of G-Protein Coupled Receptor Protein Signaling](#), [G-protein mediated Events](#), [Signaling Events mediated by VEGFR1 and VEGFR2](#), [Interaction of EGFR with phospholipase C-gamma](#), [Thromboxane A2 Receptor Signaling](#), [VEGFR1 Specific Signals](#), [VEGF Signaling](#)

Application Details

Application Notes: WB 1:500-1:2000 , IHC 1:50-1:200 , ICC 1:50-1:200 , IF 1:50-1:100 , IP 1:20-1:50 , FC 1:20-1:50

Restrictions: For Research Use only

Handling

Format: Liquid

Concentration: 1 mg/mL

Buffer: PBS with 0.02 % sodium azide, 50 % glycerol, pH 7.4

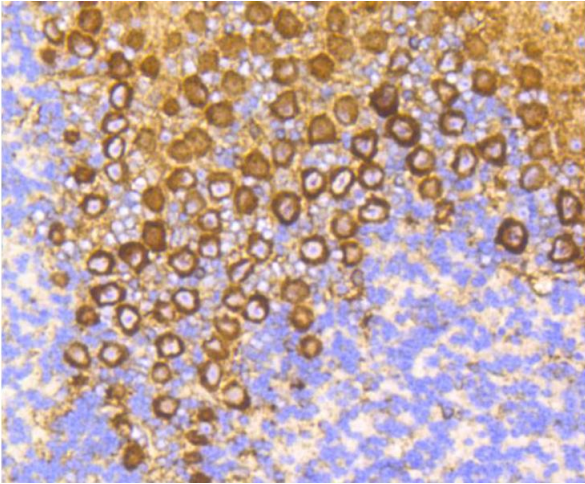
Preservative: Sodium azide

Precaution of Use: This product contains Sodium azide: a POISONOUS AND HAZARDOUS SUBSTANCE which should be handled by trained staff only.

Handling Advice: Avoid repeated freeze/thaw cycles.

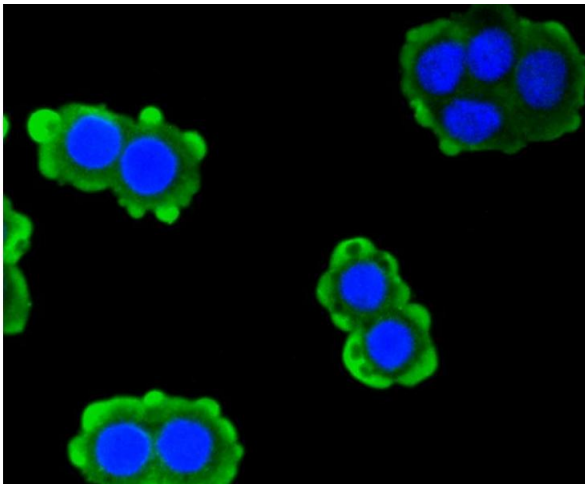
Storage: -20 °C

Storage Comment: Store at -20°C.



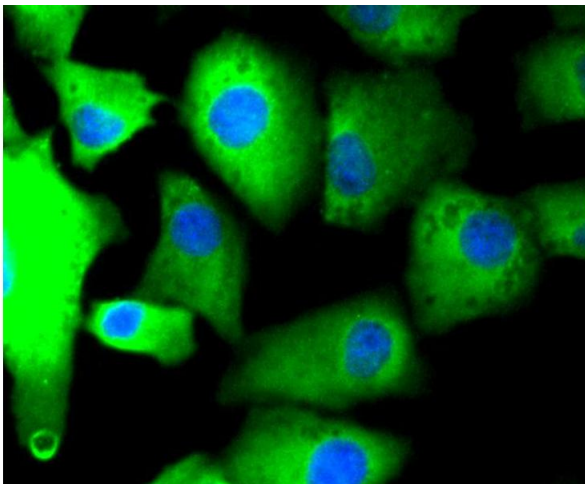
Immunohistochemistry

Image 1. Immunohistochemistry of paraffin-embedded mouse brain using PRKCA antibody (ABIN4904772) at dilution of 1:100 (40x lens).



Immunofluorescence

Image 2. Immunofluorescence analysis of CRC cells using PRKCA antibody (ABIN4904772).



Immunofluorescence

Image 3. Immunofluorescence analysis of A549 cells using PRKCA antibody (ABIN4904772).

Please check the [product details page](#) for more images. Overall 8 images are available for ABIN4904772.