

Datasheet for ABIN4905025

anti-ROBO2 antibody**2** Images[Go to Product page](#)

Overview

Quantity:	100 µL
Target:	ROBO2
Reactivity:	Human, Mouse, Rat
Host:	Rabbit
Clonality:	Polyclonal
Conjugate:	This ROBO2 antibody is un-conjugated
Application:	Western Blotting (WB)

Product Details

Immunogen:	Recombinant protein of human ROBO2.
Isotype:	IgG
Characteristics:	The protein encoded by this gene belongs to the ROBO family, part of the immunoglobulin superfamily of proteins that are highly conserved from fly to human. The encoded protein is a transmembrane receptor for the slit homolog 2 protein and functions in axon guidance and cell migration. Mutations in this gene are associated with vesicoureteral reflux, characterized by the backward flow of urine from the bladder into the ureters or the kidney. Alternative splicing results in multiple transcript variants.
Purification:	Affinity purification

Target Details

Target:	ROBO2
---------	-------

Target Details

Alternative Name:	ROBO2 (ROBO2 Products)
Gene ID:	6092
UniProt:	Q9HCK4
Pathways:	Regulation of Cell Size

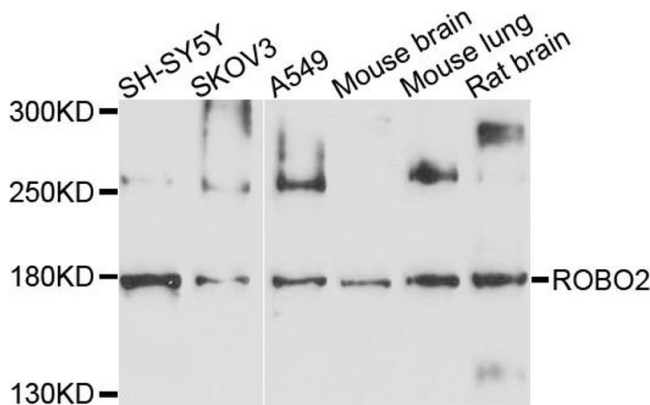
Application Details

Application Notes:	WB 1:500-1:2000
Restrictions:	For Research Use only

Handling

Format:	Liquid
Concentration:	1 mg/mL
Buffer:	PBS with 0.02 % sodium azide, 50 % glycerol, pH 7.4
Preservative:	Sodium azide
Precaution of Use:	This product contains Sodium azide: a POISONOUS AND HAZARDOUS SUBSTANCE which should be handled by trained staff only.
Handling Advice:	Avoid repeated freeze/thaw cycles.
Storage:	-20 °C
Storage Comment:	Store at -20°C.

Images



Western Blotting

Image 1. Western blot analysis of extracts of various cell lines, using ROBO2 antibody (ABIN4905025) at 1:1000 dilution. Secondary antibody: HRP Goat Anti-Rabbit IgG (H+L) at 1:10000 dilution. Lysates/proteins: 25ug per lane. Blocking buffer: 3% nonfat dry milk in TBST. Detection: ECL Enhanced Kit. Exposure time: 90s.

Western Blotting

Image 2. Western blot analysis of extracts of various cell lines, using ROBO2 antibody.

