



## Datasheet for ABIN4905073 anti-RUNX1T1 antibody



[Go to Product page](#)

### 2 Images

#### Overview

Quantity:	100 µL
Target:	RUNX1T1
Reactivity:	Human, Mouse, Rat
Host:	Rabbit
Clonality:	Polyclonal
Conjugate:	This RUNX1T1 antibody is un-conjugated
Application:	Western Blotting (WB), Immunohistochemistry (IHC)

#### Product Details

Immunogen:	Recombinant protein of human RUNX1T1.
Isotype:	IgG
Characteristics:	<p>This gene encodes a member of the myeloid translocation gene family which interact with DNA-bound transcription factors and recruit a range of corepressors to facilitate transcriptional repression. The t(8,21)(q22,q22) translocation is one of the most frequent karyotypic abnormalities in acute myeloid leukemia. The translocation produces a chimeric gene made up of the 5'-region of the runt-related transcription factor 1 gene fused to the 3'-region of this gene. The chimeric protein is thought to associate with the nuclear corepressor/histone deacetylase complex to block hematopoietic differentiation. Alternative splicing results in multiple transcript variants.</p>
Purification:	Affinity purification

## Target Details

Target:	RUNX1T1
Alternative Name:	RUNX1T1 ( <a href="#">RUNX1T1 Products</a> )
Gene ID:	862
UniProt:	<a href="#">Q06455</a>

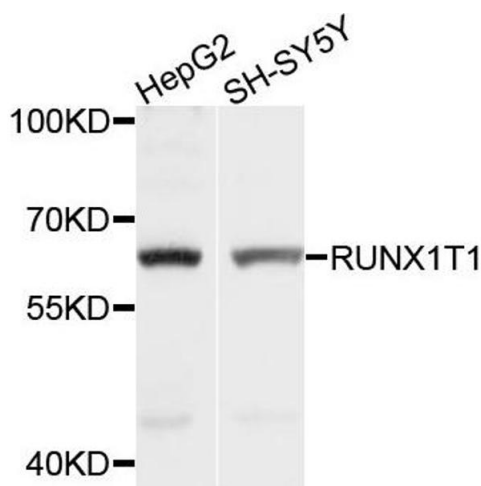
## Application Details

Application Notes:	WB 1:200-1:1000 , IHC 1:50-1:200
Restrictions:	For Research Use only

## Handling

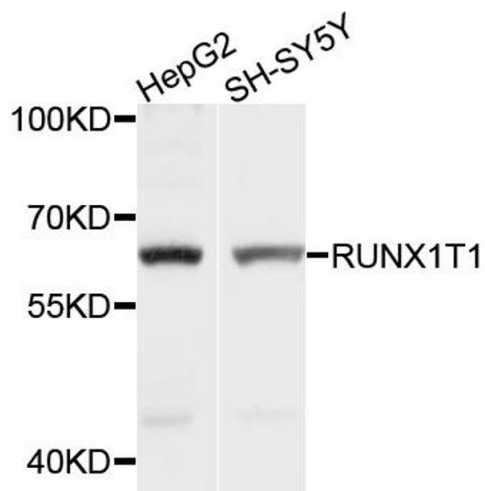
Format:	Liquid
Concentration:	1 mg/mL
Buffer:	PBS with 0.02 % sodium azide, 50 % glycerol, pH 7.4
Preservative:	Sodium azide
Precaution of Use:	This product contains Sodium azide: a POISONOUS AND HAZARDOUS SUBSTANCE which should be handled by trained staff only.
Handling Advice:	Avoid repeated freeze/thaw cycles.
Storage:	-20 °C
Storage Comment:	Store at -20°C.

## Images



### Western Blotting

**Image 1.** Western blot analysis of extracts of HepG2 and SH-SY5Y cells, using RUNX1T1 antibody.



### Western Blotting

**Image 2.** Western blot analysis of extracts of various cell lines, using RUNX1T1 antibody (ABIN4905073) at 1:1000 dilution. Secondary antibody: HRP Goat Anti-Rabbit IgG (H+L) at 1:10000 dilution. Lysates/proteins: 25ug per lane. Blocking buffer: 3% nonfat dry milk in TBST. Detection: ECL Basic Kit. Exposure time: 1s.