

Datasheet for ABIN4905135

anti-SETD5 antibody

5 Images



[Go to Product page](#)

Overview

Quantity:	100 µL
Target:	SETD5
Reactivity:	Human, Mouse
Host:	Rabbit
Clonality:	Polyclonal
Conjugate:	This SETD5 antibody is un-conjugated
Application:	Immunohistochemistry (IHC), Western Blotting (WB), Immunofluorescence (IF)

Product Details

Isotype:	IgG
Characteristics:	This function of this gene has yet to be determined but mutations in this gene have been associated with autosomal dominant mental retardation-23. Alternative splicing results in multiple transcript variants encoding different isoforms.
Purification:	Affinity purification

Target Details

Target:	SETD5
Alternative Name:	SETD5 (SETD5 Products)
Gene ID:	55209
UniProt:	Q9C0A6

Application Details

Application Notes: WB 1:500-1:2000, IHC 1:50-1:200, IF 1:50-1:100

Restrictions: For Research Use only

Handling

Format: Liquid

Concentration: 1 mg/mL

Buffer: PBS with 0.02 % sodium azide, 50 % glycerol, pH 7.4

Preservative: Sodium azide

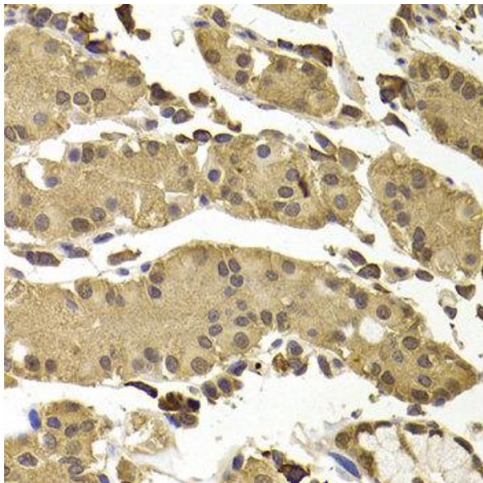
Precaution of Use: This product contains Sodium azide: a POISONOUS AND HAZARDOUS SUBSTANCE which should be handled by trained staff only.

Handling Advice: Avoid repeated freeze/thaw cycles.

Storage: -20 °C

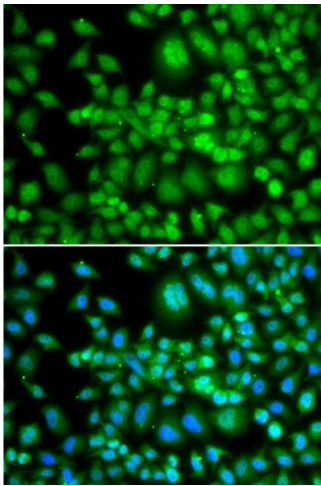
Storage Comment: Store at -20°C.

Images



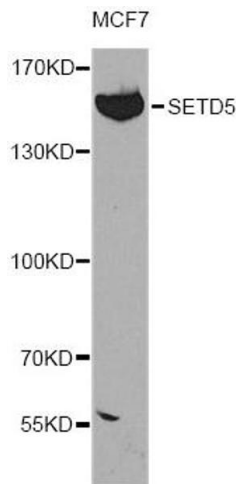
Immunofluorescence

Image 1. Immunofluorescence analysis of MCF7 cell using SETD5 antibody. Blue: DAPI for nuclear staining.



Immunohistochemistry

Image 2. Immunohistochemistry of paraffin-embedded human stomach using SETD5 antibody at dilution of 1:100 (x400 lens).



Western Blotting

Image 3. Western blot analysis of extracts of MCF-7 cells, using SETD5 antibody (ABIN4905135) at 1:300 dilution. Secondary antibody: HRP Goat Anti-Rabbit IgG (H+L) at 1:10000 dilution. Lysates/proteins: 25ug per lane. Blocking buffer: 3% nonfat dry milk in TBST. Detection: ECL Basic Kit. Exposure time: 90s.

Please check the [product details page](#) for more images. Overall 5 images are available for ABIN4905135.