



Datasheet for ABIN4905184  
**anti-SLC22A9 antibody**



[Go to Product page](#)

1 Image

Overview

Quantity:	100 µL
Target:	SLC22A9
Reactivity:	Human, Mouse, Rat
Host:	Rabbit
Clonality:	Polyclonal
Conjugate:	This SLC22A9 antibody is un-conjugated
Application:	Western Blotting (WB)

Product Details

Immunogen:	Recombinant protein of human SLC22A9.
Isotype:	IgG
Characteristics:	Rabbit Polyclonal to SLC22A9.
Purification:	Affinity purification

Target Details

Target:	SLC22A9
Alternative Name:	SLC22A9 ( <a href="#">SLC22A9 Products</a> )
Gene ID:	114571
UniProt:	<a href="#">Q8IVM8</a>

## Application Details

Application Notes: WB 1:200-1:5000

Restrictions: For Research Use only

## Handling

Format: Liquid

Concentration: 1 mg/mL

Buffer: PBS with 0.02 % sodium azide, 50 % glycerol, pH 7.4

Preservative: Sodium azide

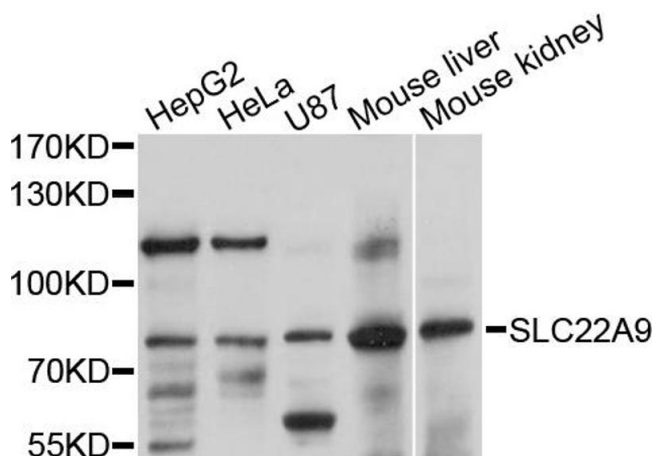
Precaution of Use: This product contains Sodium azide: a POISONOUS AND HAZARDOUS SUBSTANCE which should be handled by trained staff only.

Handling Advice: Avoid repeated freeze/thaw cycles.

Storage: -20 °C

Storage Comment: Store at -20°C.

## Images



### Western Blotting

**Image 1.** Western blot analysis of extracts of various cell lines, using SLC22A9 antibody (ABIN4905184) at 1:1000 dilution. Secondary antibody: HRP Goat Anti-Rabbit IgG (H+L) at 1:10000 dilution. Lysates/proteins: 25ug per lane. Blocking buffer: 3% nonfat dry milk in TBST. Detection: ECL Basic Kit. Exposure time: 10s.