

Datasheet for ABIN4905372
anti-TBC1D15 antibody

2 Images

[Go to Product page](#)

Overview

Quantity:	100 µL
Target:	TBC1D15
Reactivity:	Human, Mouse, Rat
Host:	Rabbit
Clonality:	Polyclonal
Conjugate:	This TBC1D15 antibody is un-conjugated
Application:	Western Blotting (WB)

Product Details

Immunogen:	Recombinant protein of human TBC1D15.
Isotype:	IgG
Characteristics:	This gene encodes a member of the Ras-like proteins in brain-GTPase activating protein superfamily that share a conserved Tre-2/Bub2/Cdc16 domain. The encoded protein interacts with Ras-like protein in brain 5A and may function as a regulator of intracellular trafficking. Alternate splicing results in multiple transcript variants.
Purification:	Affinity purification

Target Details

Target:	TBC1D15
Alternative Name:	TBC1D15 (TBC1D15 Products)
Gene ID:	64786

Target Details

UniProt: [Q8TC07](#)

Application Details

Application Notes: WB 1:1000-1:2000

Restrictions: For Research Use only

Handling

Format: Liquid

Concentration: 1 mg/mL

Buffer: PBS with 0.02 % sodium azide, 50 % glycerol, pH 7.4

Preservative: Sodium azide

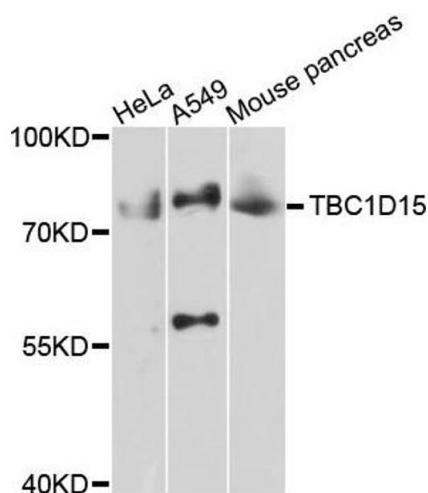
Precaution of Use: This product contains Sodium azide: a POISONOUS AND HAZARDOUS SUBSTANCE which should be handled by trained staff only.

Handling Advice: Avoid repeated freeze/thaw cycles.

Storage: -20 °C

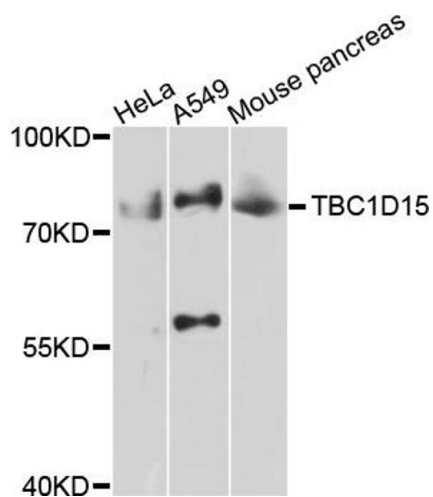
Storage Comment: Store at -20°C.

Images



Western Blotting

Image 1. Western blot analysis of extracts of various cells, using TBC1D15 antibody.



Western Blotting

Image 2. Western blot analysis of extracts of various cell lines, using TBC1D15 antibody (ABIN4905372) at 1:1000 dilution. Secondary antibody: HRP Goat Anti-Rabbit IgG (H+L) at 1:10000 dilution. Lysates/proteins: 25ug per lane. Blocking buffer: 3% nonfat dry milk in TBST. Detection: ECL Basic Kit. Exposure time: 10s.