

Datasheet for ABIN4906359

**anti-ATG3 antibody**

## 4 Images

[Go to Product page](#)

## Overview

Quantity:	100 µL
Target:	ATG3
Reactivity:	Human, Mouse
Host:	Mouse
Clonality:	Monoclonal
Conjugate:	This ATG3 antibody is un-conjugated
Application:	Western Blotting (WB), Immunohistochemistry (Paraffin-embedded Sections) (IHC (p))

## Product Details

Immunogen:	This ATG3 antibody is generated from a mouse immunized with recombinant protein of human ATG3.
Clone:	7C2
Isotype:	IgG1
Cross-Reactivity:	Human, Mouse
Purification:	Purified by Protein G.

## Target Details

Target:	ATG3
Alternative Name:	ATG3 ( <a href="#">ATG3 Products</a> )
Background:	Synonyms: APG3, APG3L, PC3-96, APG3-LIKE, Ubiquitin-like-conjugating enzyme ATG3,

## Target Details

Autophagy-related protein 3, hApg3, Protein PC3-96, ATG3

Background: E2 conjugating enzyme required for the cytoplasm to vacuole transport (Cvt), autophagy, and mitochondrial homeostasis. Responsible for the E2-like covalent binding of phosphatidylethanolamine to the C-terminal Gly of ATG8-like proteins (GABARAP, GABARAPL1, GABARAPL2 or MAP1LC3A). The ATG12-ATG5 conjugate plays a role of an E3 and promotes the transfer of ATG8-like proteins from ATG3 to phosphatidylethanolamine (PE). This step is required for the membrane association of ATG8-like proteins. The formation of the ATG8-phosphatidylethanolamine conjugates is essential for autophagy and for the cytoplasm to vacuole transport (Cvt). Preferred substrate is MAP1LC3A. Also acts as an autocatalytic E2-like enzyme, catalyzing the conjugation of ATG12 to itself, ATG12 conjugation to ATG3 playing a role in mitochondrial homeostasis but not in autophagy. ATG7 (E1-like enzyme) facilitates this reaction by forming an E1-E2 complex with ATG3. Promotes primary ciliogenesis by removing OFD1 from centriolar satellites via the autophagic pathway.

Gene ID: 64422

UniProt: [Q9NT62](#)

Pathways: [Autophagy](#)

## Application Details

Application Notes: WB 1:300-5000  
IHC-P 1:200-400

Restrictions: For Research Use only

## Handling

Format: Liquid

Concentration: 0.5 µg/µL

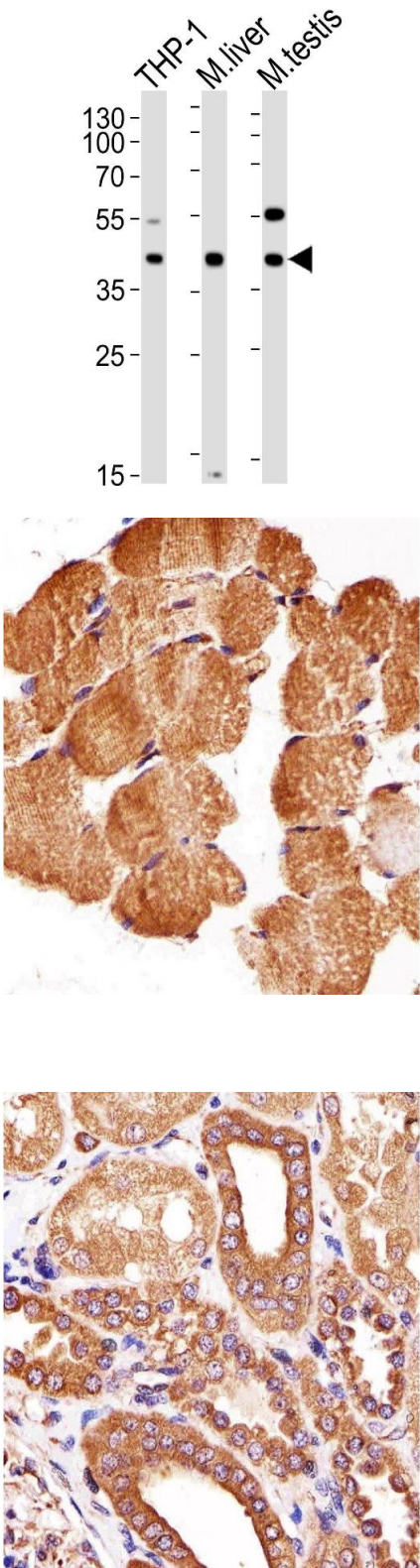
Buffer: 0.01M TBS( pH 7.4) with 1 % BSA, 0.02 % Proclin300 and 50 % Glycerol.

Preservative: ProClin

Precaution of Use: This product contains ProClin: a POISONOUS AND HAZARDOUS SUBSTANCE, which should be handled by trained staff only.

Storage: -20 °C

Storage Comment: Store at -20°C for 12 months.



Western Blotting

**Image 1.** Lane 1: THP-1 Cell lysates, Lane 2: mouse liver lysates, Lane 3: mouse testis lysates, probed with ATG3 (1377CT239.6.1.12) Monoclonal Antibody, unconjugated (bsm-51284M) at 1:1000 overnight at 4°C followed by a conjugated secondary antibody for 60 minutes at 37°C.

Immunohistochemistry (Paraffin-embedded Sections)

**Image 2.** Paraformaldehyde-fixed, paraffin embedded Human skeletal muscle tissue, Antigen retrieval by boiling in sodium citrate buffer (pH6.0) for 15min, Block endogenous peroxidase by 3% hydrogen peroxide for 15 minutes, Blocking buffer (3% BSA) at room temperature for 30min, Antibody incubation with ATG3 (1377CT239.6.1.12) Monoclonal Antibody (bsm-51284M) at 1:25 for 1 hour at 37°C, followed by a conjugated secondary antibody for 20 minutes and DAB staining.

Immunohistochemistry (Paraffin-embedded Sections)

**Image 3.** Paraformaldehyde-fixed, paraffin embedded human kidney tissue, Antigen retrieval by boiling in sodium citrate buffer (pH6.0) for 15min, Block endogenous peroxidase by 3% hydrogen peroxide for 15 minutes, Blocking buffer (3% BSA) at room temperature for 30min, Antibody incubation with ATG3 (1377CT239.6.1.12) Monoclonal Antibody (bsm-51284M) at 1:25 for 1 hour at 37°C, followed by a conjugated secondary antibody for 20 minutes and DAB staining.

## Images

---

Please check the [product details page](#) for more images. Overall 4 images are available for ABIN4906359.