

Datasheet for ABIN4906368

anti-ATG4D antibody[Go to Product page](#)**1** Image

Overview

Quantity:	100 µL
Target:	ATG4D
Reactivity:	Human
Host:	Mouse
Clonality:	Monoclonal
Application:	Western Blotting (WB)

Product Details

Immunogen:	This ATG4D monoclonal antibody is generated from mouse immunized with ATG4D recombinant protein.
Clone:	2C1
Isotype:	IgG1
Cross-Reactivity:	Human
Purification:	Mouse monoclonal antibody supplied in crude ascites with 0.09% (W/V) sodium azide.

Target Details

Target:	ATG4D
Alternative Name:	ATG4D (ATG4D Products)
Background:	Synonyms: APG4D, AUTL4, APG4-D, Cysteine protease ATG4D, AUT-like 4 cysteine endopeptidase, Autophagin-4, Autophagy-related cysteine endopeptidase 4, Autophagy-related protein 4 homolog D, ATG4D

Target Details

Background: Cysteine protease ATG4D: Cysteine protease required for the cytoplasm to vacuole transport (Cvt) and autophagy. Cleaves the C-terminal amino acid of ATG8 family proteins MAP1LC3 and GABARAPL2, to reveal a C-terminal glycine. Exposure of the glycine at the C-terminus is essential for ATG8 proteins conjugation to phosphatidylethanolamine (PE) and insertion to membranes, which is necessary for autophagy. Has also an activity of delipidating enzyme for the PE-conjugated forms. Cysteine protease ATG4D, mitochondrial: Plays a role as an autophagy regulator that links mitochondrial dysfunction with apoptosis. The mitochondrial import of ATG4D during cellular stress and differentiation may play important roles in the regulation of mitochondrial physiology, ROS, mitophagy and cell viability.

Gene ID: 84971

UniProt: [Q86TL0](#)

Pathways: [Autophagy](#)

Application Details

Application Notes: WB 1:300-5000

Restrictions: For Research Use only

Handling

Format: Liquid

Concentration: 0.5 µg/µL

Buffer: 0.01M TBS(pH 7.4) with 1 % BSA, 0.02 % Proclin300 and 50 % Glycerol.

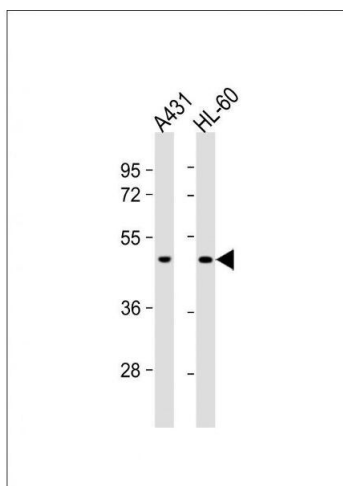
Preservative: ProClin

Precaution of Use: This product contains ProClin: a POISONOUS AND HAZARDOUS SUBSTANCE, which should be handled by trained staff only.

Storage: -20 °C

Storage Comment: Store at -20°C for 12 months.

Expiry Date: 12 months



Western Blotting

Image 1. Lane 1: A431, Lane 2: HL-60 cell lysates, probed with ATG4D (222CT15.4.1) Monoclonal Antibody, unconjugated (bsm-51061M) at 1:1000 overnight at 4°C followed by a conjugated secondary antibody for 60 minutes at 37°C.