

Datasheet for ABIN4906513
anti-BCL10 antibody



[Go to Product page](#)

2 Images

Overview

Quantity:	100 µL
Target:	BCL10
Reactivity:	Human
Host:	Mouse
Clonality:	Monoclonal
Conjugate:	This BCL10 antibody is un-conjugated
Application:	Western Blotting (WB), Immunofluorescence (IF), Flow Cytometry (FACS), Immunohistochemistry (Paraffin-embedded Sections) (IHC (p))

Product Details

Immunogen:	This BCL10 antibody is generated from a mouse immunized with a KLH conjugated synthetic peptide between 1-143 amino acids from the human region of human BCL10.
Clone:	5C2
Isotype:	IgG1
Cross-Reactivity:	Human
Purification:	Purified monoclonal antibody supplied in PBS with 0.09% (W/V) sodium azide. This antibody is purified through a protein G column, followed by dialysis against PBS.

Target Details

Target:	BCL10
Alternative Name:	BCL10 (BCL10 Products)

Target Details

Background:	<p>Synonyms: CLAP, mE10, CIPER, IMD37, c-E10, CARMEN, B-cell lymphoma/leukemia 10, B-cell CLL/lymphoma 10, Bcl-10, CARD-containing molecule enhancing NF-kappa-B, CARD-like apoptotic protein, hCLAP, CED-3/ICH-1 prodomain homologous E10-like regulator, Cellular homolog of vCARMEN, cCARMEN, Cellular-E10, Mammalian CARD-containing adapter molecule E10, BCL10</p> <p>Background: Involved in adaptive immune response (PubMed:25365219). Promotes apoptosis, pro-caspase-9 maturation and activation of NF-kappa-B via NIK and IKK. May be an adapter protein between upstream TNFR1-TRADD-RIP complex and the downstream NIK-IKK-IKAP complex. Is a substrate for MALT1 (PubMed:18264101).</p>
Gene ID:	8915
UniProt:	O95999
Pathways:	TCR Signaling , Fc-epsilon Receptor Signaling Pathway , Activation of Innate immune Response , Positive Regulation of Immune Effector Process , Production of Molecular Mediator of Immune Response , Tube Formation , Positive Regulation of Endopeptidase Activity , BCR Signaling , Ubiquitin Proteasome Pathway , S100 Proteins

Application Details

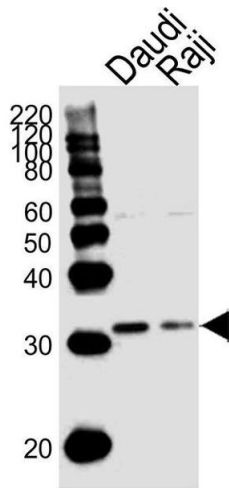
Application Notes:	WB 1:300-5000 FCM 1:20-100 IHC-P 1:200-400 IF()
Restrictions:	For Research Use only
Handling	
Format:	Liquid
Concentration:	0.5 µg/µL
Buffer:	0.01M TBS(pH 7.4) with 1 % BSA, 0.02 % Proclin300 and 50 % Glycerol.
Preservative:	ProClin
Precaution of Use:	This product contains ProClin: a POISONOUS AND HAZARDOUS SUBSTANCE, which should be handled by trained staff only.
Storage:	-20 °C

Handling

Storage Comment: Store at -20°C for 12 months.

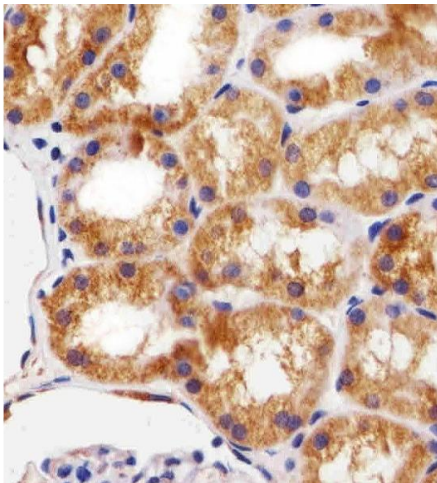
Expiry Date: 12 months

Images



Western Blotting

Image 1. Lane 1: Daudi Cell lysates, Lane 2: Raji Cell lysates, probed with BCL10 (1185CT13.2.1.2) Monoclonal Antibody, unconjugated (bsm-51398M) at 1:1000 overnight at 4°C followed by a conjugated secondary antibody for 60 minutes at 37°C.



Immunohistochemistry (Paraffin-embedded Sections)

Image 2. Paraformaldehyde-fixed, paraffin embedded SAMPLE tissue, Antigen retrieval by boiling in sodium citrate buffer (pH6.0) for 15min, Block endogenous peroxidase by 3% hydrogen peroxide for 15 minutes, Blocking buffer (3% BSA) at room temperature for 30min, Antibody incubation with ANTIBODY Monoclonal Antibody (bsm-51398M) at 1:25 for 1 hour at 37°C, followed by a conjugated secondary antibody for 20 minutes and DAB staining.