

Datasheet for ABIN4906684

anti-BRAF antibody

3 Images

[Go to Product page](#)

Overview

Quantity:	100 µL
Target:	BRAF
Reactivity:	Human, Mouse
Host:	Mouse
Clonality:	Monoclonal
Conjugate:	This BRAF antibody is un-conjugated
Application:	Western Blotting (WB), Immunofluorescence (IF)

Product Details

Immunogen:	This BRAF Monoclonal antibody is generated from mouse immunized with BRAF recombinant protein.
Clone:	5C5
Isotype:	IgG1
Cross-Reactivity:	Human, Mouse
Purification:	Purified monoclonal antibody supplied in PBS with 0.09% (W/V) sodium azide. This antibody is purified through a protein G column, eluted with high and low pH buffers and neutralized immediately, followed by dialysis against PBS.

Target Details

Target:	BRAF
Alternative Name:	BRAF (BRAF Products)

Target Details

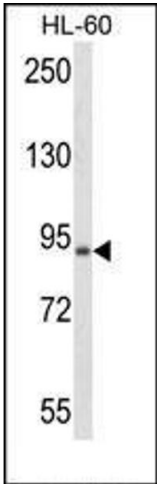
Background:	<p>Synonyms: NS7, B-raf, BRAF1, RAFB1, B-RAF1, Serine/threonine-protein kinase B-raf, Proto-oncogene B-Raf, p94, v-Raf murine sarcoma viral oncogene homolog B1, BRAF</p> <p>Background: Protein kinase involved in the transduction of mitogenic signals from the cell membrane to the nucleus. May play a role in the postsynaptic responses of hippocampal neuron. Phosphorylates MAP2K1, and thereby contributes to the MAP kinase signal transduction pathway.</p>
Gene ID:	673
UniProt:	P15056
Pathways:	MAPK Signaling , RTK Signaling , Neurotrophin Signaling Pathway , Ribonucleoprotein Complex Subunit Organization , Hepatitis C , Autophagy

Application Details

Application Notes:	WB 1:300-5000 IF()
Restrictions:	For Research Use only

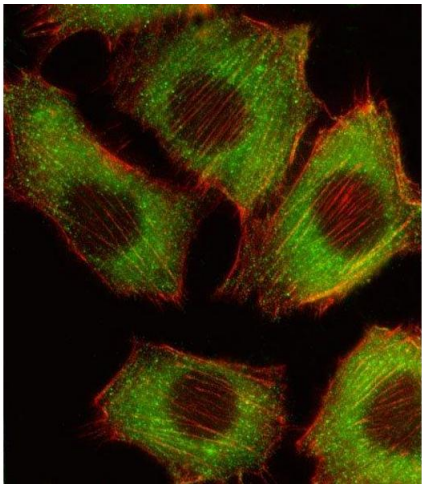
Handling

Format:	Liquid
Concentration:	0.5 µg/µL
Buffer:	0.01M TBS(pH 7.4) with 1 % BSA, 0.02 % Proclin300 and 50 % Glycerol.
Preservative:	ProClin
Precaution of Use:	This product contains ProClin: a POISONOUS AND HAZARDOUS SUBSTANCE, which should be handled by trained staff only.
Storage:	-20 °C
Storage Comment:	Store at -20°C for 12 months.
Expiry Date:	12 months



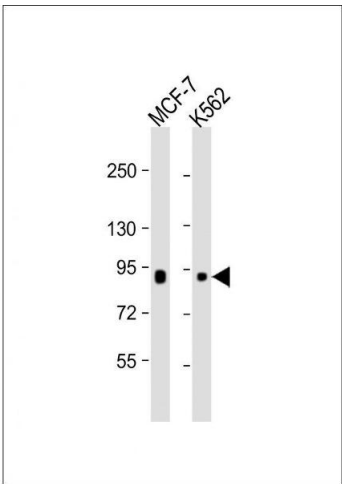
Western Blotting

Image 1. Lane 1: HL-60 Cell lysates, probed with BRAF (125CT13.3.5) Monoclonal Antibody, unconjugated (bsm-51025M) at 1:1000 overnight at 4°C followed by a conjugated secondary antibody for 60 minutes at 37°C.



Immunofluorescence (Cultured Cells)

Image 2. C2C12 cells were fixed with 4% PFA (20 min), permeabilized with Triton X-100 (0.1%, 10 min), and incubated with BRAF (125CT13.3.5) Monoclonal Antibody (bsm-51025M) at 1:25 dilution for 1 hr at 37°C. *Followed by Alexa Fluor® 488 conjugated donkey anti-mouse antibody at 1:400 dilution for 50 min at 37°C. Image shows cytoplasm BRAF staining (green), and actin (red).*



Western Blotting

Image 3. Lane 1: MCF-7 cell lysate, Lane 2: K562 cell lysate at 20 µg per lane probed with with bsm-51025M BRAF (125CT13.3.5) Monoclonal Antibody at 1:1000 dilution and 4 °C overnight incubation, followed by secondary antibody incubation for 60min at room temperature.