

Datasheet for ABIN4907492

anti-CBY1/PGEA1 antibody (AA 51-126)[Go to Product page](#)**1** Image

Overview

Quantity:	100 µL
Target:	CBY1/PGEA1 (CBY1)
Binding Specificity:	AA 51-126
Reactivity:	Human
Host:	Rabbit
Clonality:	Polyclonal
Conjugate:	This CBY1/PGEA1 antibody is un-conjugated
Application:	ELISA, Immunofluorescence (Cultured Cells) (IF (cc)), Immunofluorescence (Paraffin-embedded Sections) (IF (p)), Immunohistochemistry (Paraffin-embedded Sections) (IHC (p)), Immunocytochemistry (ICC), Immunohistochemistry (Frozen Sections) (IHC (fro))

Product Details

Immunogen:	KLH conjugated synthetic peptide derived from human CBY1
Isotype:	IgG
Predicted Reactivity:	Human
Purification:	Purified by Protein A.

Target Details

Target:	CBY1/PGEA1 (CBY1)
Alternative Name:	CBY1 (CBY1 Products)

Target Details

Background: Synonyms: CBY, arb1, PGEA1, C22orf2, PIGEA14, PIGEA-14, HS508I15A, Protein chibby homolog 1, ARPP-binding protein, Cytosolic leucine-rich protein, PKD2 interactor, Golgi and endoplasmic reticulum-associated 1, CBY1, HRIHFB2025

Background: Inhibits the Wnt/Wingless pathway by binding to CTNNB1/beta-catenin and inhibiting beta-catenin-mediated transcriptional activation through competition with TCF/LEF transcription factors. Has also been shown to play a role in regulating the intracellular trafficking of polycystin-2/PKD2 and possibly of other intracellular proteins. Promotes adipocyte and cardiomyocyte differentiation.

Gene ID: 25776

UniProt: [Q9Y3M2](#)

Application Details

Application Notes: ELISA 1:500-1000
IHC-P 1:200-400
IHC-F 1:100-500
IF(IHC-P) 1:50-200
IF(IHC-F) 1:50-200
IF(ICC) 1:50-200
ICC 1:100-500

Restrictions: For Research Use only

Handling

Format: Liquid

Concentration: 1 µg/µL

Buffer: 0.01M TBS(pH 7.4) with 1 % BSA, 0.02 % Proclin300 and 50 % Glycerol.

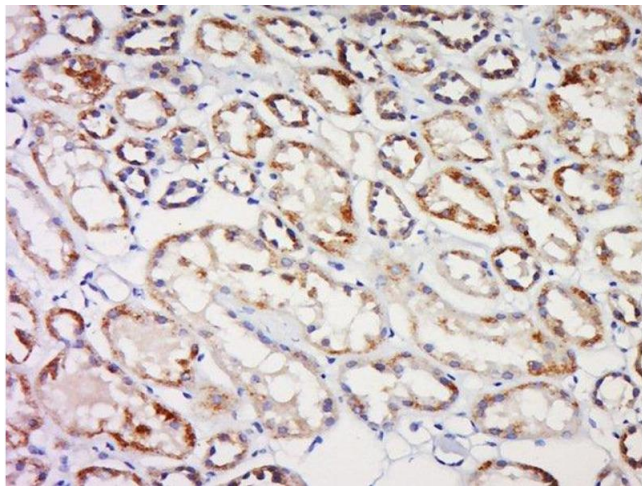
Preservative: ProClin

Precaution of Use: This product contains ProClin: a POISONOUS AND HAZARDOUS SUBSTANCE, which should be handled by trained staff only.

Storage: 4 °C, -20 °C

Storage Comment: Shipped at 4°C. Store at -20°C for one year. Avoid repeated freeze/thaw cycles.

Expiry Date: 12 months



Immunohistochemistry (Paraffin-embedded Sections)

Image 1. Formalin-fixed and paraffin embedded human kidney cancer labeled with CBY1 Polyclonal Antibody, Unconjugated at 1:200 followed by conjugation to the secondary antibody and DAB staining