

Datasheet for ABIN4907618

anti-CCRK antibody[Go to Product page](#)**1** Image

Overview

Quantity:	100 µL
Target:	CCRK (CDK20)
Reactivity:	Human
Host:	Mouse
Clonality:	Monoclonal
Conjugate:	This CCRK antibody is un-conjugated
Application:	Western Blotting (WB)

Product Details

Immunogen:	Purified His-tagged CCRK protein was used to produced this monoclonal antibody.
Clone:	5C1
Isotype:	IgG1
Cross-Reactivity:	Human
Purification:	Purified monoclonal antibody supplied in PBS with 0.09% (W/V) sodium azide. This antibody is purified through a protein G column, eluted with high and low pH buffers and neutralized immediately, followed by dialysis against PBS.

Target Details

Target:	CCRK (CDK20)
Alternative Name:	CCRK (CDK20 Products)

Target Details

Background:	<p>Synonyms: P42, CCRK, CDCH, PNQALRE, Cyclin-dependent kinase 20, CDK-activating kinase p42, CAK-kinase p42, Cell cycle-related kinase, Cell division protein kinase 20, Cyclin-dependent protein kinase H, Cyclin-kinase-activating kinase p42, CDK20</p> <p>Background: Required for high-level Shh responses in the developing neural tube. Together with TBC1D32, controls the structure of the primary cilium by coordinating assembly of the ciliary membrane and axoneme, allowing GLI2 to be properly activated in response to SHH signaling (By similarity). Involved in cell growth. Activates CDK2, a kinase involved in the control of the cell cycle, by phosphorylating residue 'Thr-160'.</p>
-------------	---

Gene ID:	23552
----------	-------

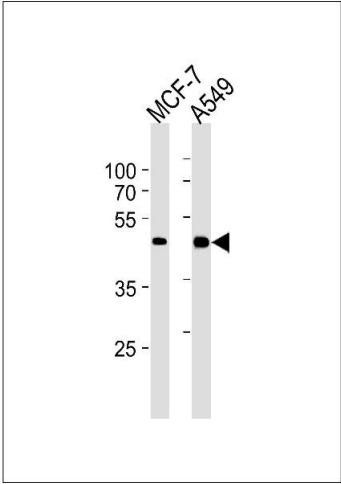
UniProt:	Q8IZL9
----------	------------------------

Application Details

Application Notes:	WB 1:300-5000
Restrictions:	For Research Use only

Handling

Format:	Liquid
Concentration:	0.5 µg/µL
Buffer:	0.01M TBS(pH 7.4) with 1 % BSA, 0.02 % Proclin300 and 50 % Glycerol.
Preservative:	ProClin
Precaution of Use:	This product contains ProClin: a POISONOUS AND HAZARDOUS SUBSTANCE, which should be handled by trained staff only.
Storage:	-20 °C
Storage Comment:	Store at -20°C for 12 months.
Expiry Date:	12 months



Western Blotting

Image 1. Lane 1: MCF-7 Cell lysates, Lane 2: A549 Cell lysates, probed with CCRK (885CT27.1.1) Monoclonal Antibody, unconjugated (bsm-51231M) at 1:1000 overnight at 4°C followed by a conjugated secondary antibody for 60 minutes at 37°C.