

Datasheet for ABIN4908306

anti-CREB3L4 antibody[Go to Product page](#)**1** Image

Overview

Quantity:	100 µL
Target:	CREB3L4
Reactivity:	Human, Rat
Host:	Mouse
Clonality:	Monoclonal
Conjugate:	This CREB3L4 antibody is un-conjugated
Application:	Western Blotting (WB)

Product Details

Immunogen:	This CREB3L4 antibody is generated from mice immunized with a recombinant between 1-300 amino acids from the region of human CREB3L4.
Clone:	5C1
Isotype:	IgG1
Cross-Reactivity:	Human, Rat
Purification:	Purified monoclonal antibody supplied in PBS with 0.09% (W/V) sodium azide. This antibody is purified through a protein G column, eluted with high and low pH buffers and neutralized immediately, followed by dialysis against PBS.

Target Details

Target:	CREB3L4
Alternative Name:	CREB3L4 (CREB3L4 Products)

Target Details

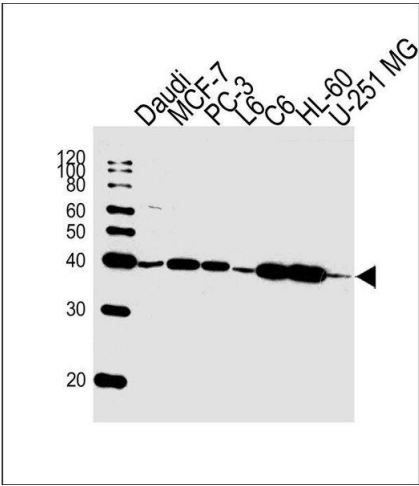
Background:	<p>Synonyms: JAL, hJAL, ATCE1, CREB3, CREB4, AIBZIP, Cyclic AMP-responsive element-binding protein 3-like protein 4, cAMP-responsive element-binding protein 3-like protein 4, Androgen-induced basic leucine zipper protein, Attaching to CRE-like 1, Cyclic AMP-responsive element-binding protein 4, CREB-4, cAMP-responsive element-binding protein 4, Transcript induced in spermiogenesis protein 40, Tisp40, CREB3L4</p> <p>Background: Transcriptional activator that may play a role in the unfolded protein response. Binds to the UPR element (UPRE) but not to CRE element. Preferentially binds DNA with to the consensus sequence 5'-T[GT]ACGT[GA][GT]-3' and has transcriptional activation activity from UPRE. Binds to NF-kappa-B site and has transcriptional activation activity from NF-kappa-B-containing regulatory elements (By similarity).</p>
Gene ID:	148327
UniProt:	Q8TEY5
Pathways:	Thyroid Hormone Synthesis

Application Details

Application Notes:	WB 1:300-5000
Restrictions:	For Research Use only

Handling

Format:	Liquid
Concentration:	0.5 µg/µL
Buffer:	0.01M TBS(pH 7.4) with 1 % BSA, 0.02 % Proclin300 and 50 % Glycerol.
Preservative:	ProClin
Precaution of Use:	This product contains ProClin: a POISONOUS AND HAZARDOUS SUBSTANCE, which should be handled by trained staff only.
Storage:	-20 °C
Storage Comment:	Store at -20°C for 12 months.
Expiry Date:	12 months



Western Blotting

Image 1. Lane 1: Daudi Cell lysates, Lane 2: MCF-7 Cell lysates, Lane 3: PC-3 Cell lysates, Lane 4: L6 Cell lysates, Lane 5: C6 Cell lysates, Lane 6: HL-60 Cell lysates, Lane 7: U-251 MG Cell lysates, probed with CREB3L4 (1165CT16.1.1) Monoclonal Antibody, unconjugated (bsm-51394M) at 1:1000 overnight at 4°C followed by a conjugated secondary antibody for 60 minutes at 37°C.