

Datasheet for ABIN4908340  
**anti-CR1L antibody (AA 51-150)**[Go to Product page](#)

## 1 Image

## Overview

Quantity:	100 µL
Target:	CR1L
Binding Specificity:	AA 51-150
Reactivity:	Mouse
Host:	Rabbit
Clonality:	Polyclonal
Conjugate:	This CR1L antibody is un-conjugated
Application:	Western Blotting (WB), Immunohistochemistry (Frozen Sections) (IHC (fro)), Immunofluorescence (Cultured Cells) (IF (cc)), Immunofluorescence (Paraffin-embedded Sections) (IF (p)), ELISA, Immunohistochemistry (Paraffin-embedded Sections) (IHC (p)), Immunocytochemistry (ICC)

## Product Details

Immunogen:	KLH conjugated synthetic peptide derived from human Crry
Isotype:	IgG
Cross-Reactivity:	Mouse
Predicted Reactivity:	Rat
Purification:	Purified by Protein A.

## Target Details

Target:	CR1L
---------	------

## Target Details

Alternative Name:	Crry ( <a href="#">CR1L Products</a> )
Background:	<p>Synonyms: Mcp, Crry, mCRY, Complement component receptor 1-like protein, Complement regulatory protein Crry, Protein p65, Cr1l, Cry</p> <p>Background: Acts as a cofactor for complement factor I, a serine protease which protects autologous cells against complement-mediated injury by cleaving C3b and C4b deposited on host tissue. Also acts as a decay-accelerating factor, preventing the formation of C4b2a and C3bBb, the amplification convertases of the complement cascade. Plays a crucial role in early embryonic development by maintaining fetomaternal tolerance. Also acts as a costimulatory factor for T-cells which favors IL-4 secretion.</p>
Gene ID:	12946
UniProt:	<a href="#">Q64735</a>
Pathways:	<a href="#">Complement System</a>

## Application Details

Application Notes:	WB 1:300-5000 ELISA 1:500-1000 IHC-P 1:200-400 IHC-F 1:100-500 IF(IHC-P) 1:50-200 IF(IHC-F) 1:50-200 IF(ICC) 1:50-200 ICC 1:100-500
Restrictions:	For Research Use only

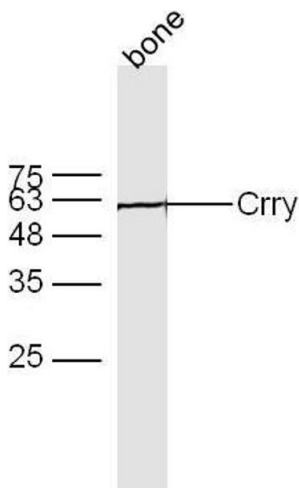
## Handling

Format:	Liquid
Concentration:	1 µg/µL
Buffer:	0.01M TBS( pH 7.4) with 1 % BSA, 0.02 % Proclin300 and 50 % Glycerol.
Preservative:	ProClin
Precaution of Use:	This product contains ProClin: a POISONOUS AND HAZARDOUS SUBSTANCE, which should be handled by trained staff only.

Handling

Storage:	4 °C,-20 °C
Storage Comment:	Shipped at 4°C. Store at -20°C for one year. Avoid repeated freeze/thaw cycles.
Expiry Date:	12 months

Images



Western Blotting

**Image 1.** Bone lyates probed with Crry Polyclonal Antibody, Unconjugated at 1:300 overnight at 4°C. Followed by a conjugated secondary antibody -HRP) at 1:5000 for 90 min at 37°C.