

Datasheet for ABIN4909185

**anti-EPH Receptor A6 antibody**[Go to Product page](#)**1** Image

## Overview

Quantity:	100 µL
Target:	EPH Receptor A6 (Epha6)
Reactivity:	Human
Host:	Mouse
Clonality:	Monoclonal
Conjugate:	This EPH Receptor A6 antibody is un-conjugated
Application:	Western Blotting (WB)

## Product Details

Immunogen:	This EPHA6 antibody is generated from a mouse immunized with a recombinant protein.
Clone:	6C9
Isotype:	IgG1
Cross-Reactivity:	Human
Purification:	Purified by Protein G.

## Target Details

Target:	EPH Receptor A6 (Epha6)
Alternative Name:	EPHA6 ( <a href="#">Epha6 Products</a> )
Background:	Synonyms: EHK2, EK12, EPA6, EHK-2, HEK12, PRO57066, Ephrin type-A receptor 6, EPH homology kinase 2, EPH-like kinase 12, EPHA6

## Target Details

Background: Receptor tyrosine kinase which binds promiscuously GPI-anchored ephrin-A family ligands residing on adjacent cells, leading to contact-dependent bidirectional signaling into neighboring cells. The signaling pathway downstream of the receptor is referred to as forward signaling while the signaling pathway downstream of the ephrin ligand is referred to as reverse signaling (By similarity).

Gene ID: 285220

UniProt: [Q9UF33](#)

Pathways: [RTK Signaling](#)

## Application Details

Application Notes: WB 1:300-5000

Restrictions: For Research Use only

## Handling

Format: Liquid

Concentration: 0.5 µg/µL

Buffer: 0.01M TBS( pH 7.4) with 1 % BSA, 0.02 % Proclin300 and 50 % Glycerol.

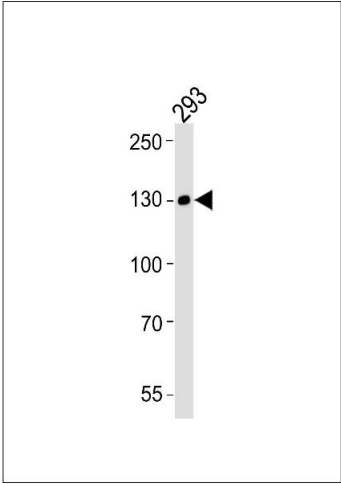
Preservative: ProClin

Precaution of Use: This product contains ProClin: a POISONOUS AND HAZARDOUS SUBSTANCE, which should be handled by trained staff only.

Storage: -20 °C

Storage Comment: Store at -20°C for 12 months.

Expiry Date: 12 months



Western Blotting

**Image 1.** Lane 1: 293 Cell lysates, probed with EPHA6 (1426CT591.205.91.119) Monoclonal Antibody, unconjugated (bsm-51286M) at 1:1000 overnight at 4°C followed by a conjugated secondary antibody for 60 minutes at 37°C.