

Datasheet for ABIN4910072

anti-SLC1A2 antibody[Go to Product page](#)**1** Image

Overview

Quantity:	100 µL
Target:	SLC1A2
Reactivity:	Human
Host:	Mouse
Clonality:	Monoclonal
Conjugate:	This SLC1A2 antibody is un-conjugated
Application:	Western Blotting (WB)

Product Details

Immunogen:	Purified His-tagged GLT protein was used to produced this monoclonal antibody.
Clone:	4C3
Isotype:	IgG1
Cross-Reactivity:	Human
Purification:	Mouse monoclonal antibody supplied in crude ascites with 0.09% (W/V) sodium azide.

Target Details

Target:	SLC1A2
Alternative Name:	GLT (SLC1A2 Products)
Background:	Synonyms: GBP, GAL1, Galectin-1, Gal-1, 14 kDa laminin-binding protein, HLBP14, 14 kDa lectin, Beta-galactoside-binding lectin L-14-I, Galaptin, HBL, HPL, Lactose-binding lectin 1, Lectin

Target Details

galactoside-binding soluble 1, Putative MAPK-activating protein PM12, S-Lac lectin 1, LGALS1
Background: Lectin that binds beta-galactoside and a wide array of complex carbohydrates.
Plays a role in regulating apoptosis, cell proliferation and cell differentiation. Inhibits CD45 protein phosphatase activity and therefore the dephosphorylation of Lyn kinase. Strong inducer of T-cell apoptosis.

Gene ID: 3956

UniProt: [P09382](#)

Pathways: [Dicarboxylic Acid Transport](#)

Application Details

Application Notes: WB 1:300-5000

Restrictions: For Research Use only

Handling

Format: Liquid

Concentration: 0.5 µg/µL

Buffer: 0.01M TBS(pH 7.4) with 1 % BSA, 0.02 % Proclin300 and 50 % Glycerol.

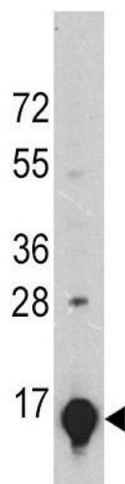
Preservative: ProClin

Precaution of Use: This product contains ProClin: a POISONOUS AND HAZARDOUS SUBSTANCE, which should be handled by trained staff only.

Storage: -20 °C

Storage Comment: Store at -20°C for 12 months.

Expiry Date: 12 months



Western Blotting

Image 1. A375 cell lysates probed with GLT (24CT661.4.3) Monoclonal Antibody, unconjugated (bsm-51017M) at 1:1000 overnight at 4°C followed by a conjugated secondary antibody for 60 minutes at Room Temperature.