

Datasheet for ABIN4910431

anti-Tyr/ser Protein Phosphatase antibody[Go to Product page](#)**1** Image

Overview

Quantity:	100 µL
Target:	Tyr/ser Protein Phosphatase
Reactivity:	Others
Host:	Mouse
Clonality:	Monoclonal
Conjugate:	This Tyr/ser Protein Phosphatase antibody is un-conjugated
Application:	Western Blotting (WB)

Product Details

Immunogen:	Purified recombinant H1L fusion protein was used to produced this monoclonal antibody.
Clone:	20C14
Cross-Reactivity:	Human
Cross-Reactivity (Details):	Vaccinia Virus
Purification:	Purified monoclonal antibody supplied in PBS with 0.09% (W/V) sodium azide. This antibody is purified through a protein G column, eluted with high and low pH buffers and neutralized immediately, followed by dialysis against PBS.

Target Details

Target:	Tyr/ser Protein Phosphatase
Alternative Name:	H1L (Tyr/ser Protein Phosphatase Products)

Target Details

Background: Optional[synonyms]: This Protein shows activity toward tyrosine-protein phosphate as well as with serine-protein phosphate.

UniProt: [P20495](#)

Application Details

Application Notes: WB 1:100-500

Restrictions: For Research Use only

Handling

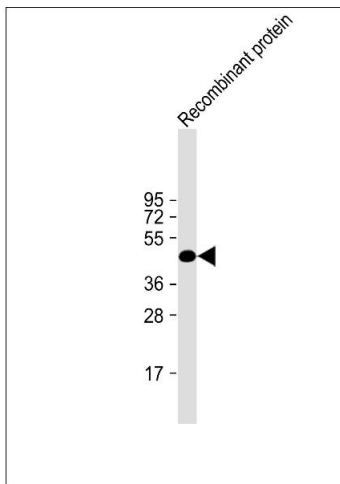
Concentration: 0.5 µg/µL

Buffer: 0.01M TBS(pH 7.4) with 1 % BSA, 0.02 % Proclin300 and 50 % Glycerol.

Storage: -20 °C

Storage Comment: Store at -20°C for 12 months.

Images



Western Blotting

Image 1. H1L recombinant protein probed with H1L (20CT26.44.10.3 / 20CT26.44.10.14) Monoclonal Antibody, unconjugated (bsm-51008M) at 1:500 dilution and incubated overnight at 4°C followed by a conjugated secondary antibody for 60 minutes at 37°C.