

Datasheet for ABIN4911821

anti-MCFD2 antibody

3 Images

[Go to Product page](#)

Overview

Quantity:	100 µL
Target:	MCFD2
Reactivity:	Human
Host:	Mouse
Clonality:	Monoclonal
Conjugate:	This MCFD2 antibody is un-conjugated
Application:	Western Blotting (WB)

Product Details

Immunogen:	This MCFD2 monoclonal antibody is generated from mouse immunized with MCFD2 recombinant protein.
Clone:	5C6
Isotype:	IgG1
Cross-Reactivity:	Human
Purification:	Purified monoclonal antibody supplied in PBS with 0.09% (W/V) sodium azide. This antibody is purified through a protein G column, eluted with high and low pH buffers and neutralized immediately, followed by dialysis against PBS.

Target Details

Target:	MCFD2
Alternative Name:	MCFD2 (MCFD2 Products)

Target Details

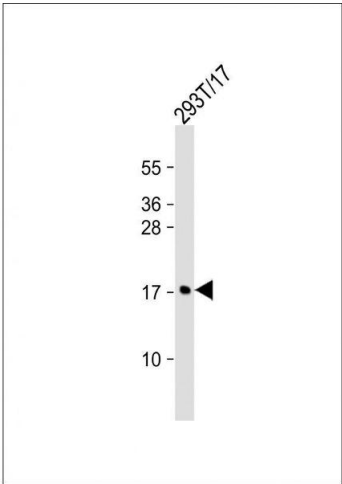
Background:	Synonyms: F5F8D, SDNSF, F5F8D2, LMAN1IP, Multiple coagulation factor deficiency protein 2, Neural stem cell-derived neuronal survival protein, MCFD2 Background: The MCFD2-LMAN1 complex forms a specific cargo receptor for the ER-to-Golgi transport of selected proteins. Plays a role in the secretion of coagulation factors.
Gene ID:	90411
UniProt:	Q8NI22

Application Details

Application Notes:	WB 1:300-5000
Restrictions:	For Research Use only

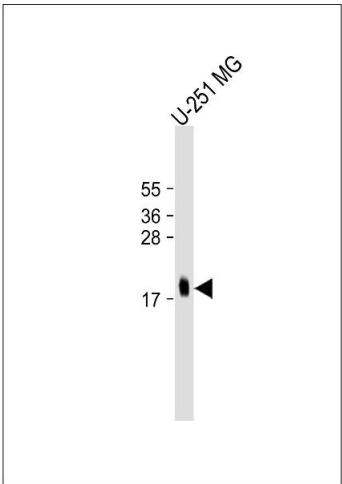
Handling

Format:	Liquid
Concentration:	0.5 µg/µL
Buffer:	0.01M TBS(pH 7.4) with 1 % BSA, 0.02 % Proclin300 and 50 % Glycerol.
Preservative:	ProClin
Precaution of Use:	This product contains ProClin: a POISONOUS AND HAZARDOUS SUBSTANCE, which should be handled by trained staff only.
Storage:	4 °C,-20 °C
Storage Comment:	Shipped at 4°C. Store at -20°C for one year. Avoid repeated freeze/thaw cycles.
Expiry Date:	12 months



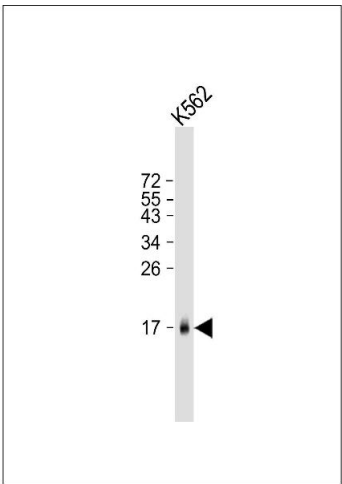
Western Blotting

Image 1. 293T/17 cell lysate (20ug) probed with bsm-51038M MCFD2 (165CT13.1.6) Monoclonal Antibody at 1:1000 dilution and 4°C *overnight incubation, followed by secondary antibody incubation for 60min at room temperature.*



Western Blotting

Image 2. U251MG cell lysate (20ug) probed with bsm-51038M MCFD2 (165CT13.1.6) Monoclonal Antibody at 1:1000 dilution and 4°C *overnight incubation, followed by secondary antibody incubation for 60min at room temperature.*



Western Blotting

Image 3. K562 cell lysate (20ug) probed with bsm-51038M MCFD2 (165CT13.1.6) Monoclonal Antibody at 1:1000 dilution and 4°C *overnight incubation, followed by secondary antibody incubation for 60min at room temperature.*