

Datasheet for ABIN4911950

anti-MITF antibody[Go to Product page](#)**1** Image

Overview

Quantity:	100 µL
Target:	MITF
Reactivity:	Human, Mouse, Rat
Host:	Mouse
Clonality:	Monoclonal
Conjugate:	This MITF antibody is un-conjugated
Application:	Western Blotting (WB)

Product Details

Immunogen:	This MITF antibody is generated from a mouse immunized with a recombinant protein of human MITF.
Clone:	M2A1
Isotype:	IgG1
Cross-Reactivity:	Human, Mouse, Rat
Purification:	Purified by Protein G.

Target Details

Target:	MITF
Alternative Name:	MITF (MITF Products)
Background:	Synonyms: MI, WS2, CMM8, WS2A, bHLHe32, Microphthalmia-associated transcription factor,

Target Details

Class E basic helix-loop-helix protein 32, MITF

Background: Transcription factor that regulates the expression of genes with essential roles in cell differentiation, proliferation and survival. Binds to symmetrical DNA sequences (E-boxes) (5'-CACGTG-3') found in the promoters of target genes, such as BCL2 and tyrosinase (TYR). Plays an important role in melanocyte development by regulating the expression of tyrosinase (TYR) and tyrosinase-related protein 1 (TYRP1). Plays a critical role in the differentiation of various cell types, such as neural crest-derived melanocytes, mast cells, osteoclasts and optic cup-derived retinal pigment epithelium.

Gene ID: 4286

UniProt: [075030](#)

Pathways: [Chromatin Binding](#)

Application Details

Application Notes: WB 1:300-5000

Restrictions: For Research Use only

Handling

Format: Liquid

Concentration: 0.5 µg/µL

Buffer: 0.01M TBS(pH 7.4) with 1 % BSA, 0.02 % Proclin300 and 50 % Glycerol.

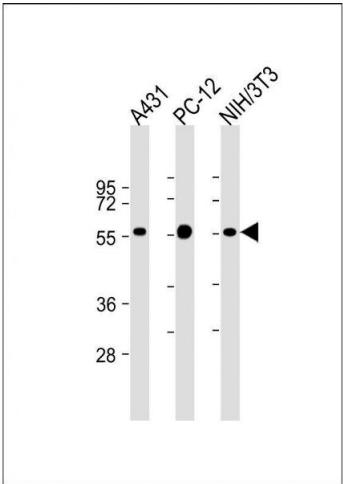
Preservative: ProClin

Precaution of Use: This product contains ProClin: a POISONOUS AND HAZARDOUS SUBSTANCE, which should be handled by trained staff only.

Storage: 4 °C,-20 °C

Storage Comment: Shipped at 4°C. Store at -20°C for one year. Avoid repeated freeze/thaw cycles.

Expiry Date: 12 months



Western Blotting

Image 1. Lane 1: A431, Lane 2: PC-12, Lane 3: NIH/3T3 cell lysate (20µg per lane) probed with bsm-51339M MITF (1607CT834.207.47) Monoclonal Antibody at 1:2000 dilution and 4°C *overnight incubation, followed by secondary antibody incubation for 60min at room temperature.*