

Datasheet for ABIN4911994

anti-MMP14 antibody**2** Images[Go to Product page](#)

Overview

Quantity:	100 µL
Target:	MMP14
Reactivity:	Human
Host:	Mouse
Clonality:	Monoclonal
Conjugate:	This MMP14 antibody is un-conjugated
Application:	Western Blotting (WB), Flow Cytometry (FACS), Immunofluorescence (IF)

Product Details

Immunogen:	This MMP14 antibody is generated from mice immunized with a KLH conjugated synthetic peptide between 470-499 amino acids from the C-terminal region of human MMP14.
Clone:	3A6
Isotype:	IgM
Cross-Reactivity:	Human
Purification:	Purified monoclonal antibody supplied in PBS with 0.09% (W/V) sodium azide. This antibody is purified through a protein G column, eluted with high and low pH buffers and neutralized immediately, followed by dialysis against PBS.

Target Details

Target:	MMP14
Alternative Name:	MMP14 (MMP14 Products)

Target Details

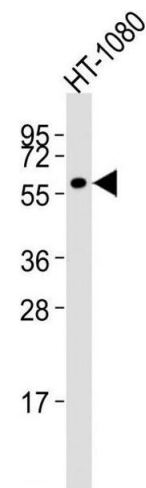
Background:	<p>Synonyms: MMP-14, MMP-X1, MT-MMP, MT1MMP, MTMMP1, WNCHRS, MT1-MMP, MT-MMP 1, Matrix metalloproteinase-14, Membrane-type matrix metalloproteinase 1, Membrane-type-1 matrix metalloproteinase, MMP14</p> <p>Background: Seems to specifically activate progelatinase A. May thus trigger invasion by tumor cells by activating progelatinase A on the tumor cell surface. May be involved in actin cytoskeleton reorganization by cleaving PTK7. Acts as a positive regulator of cell growth and migration via activation of MMP15. Involved in the formation of the fibrovascular tissues in association with pro-MMP2.</p>
Gene ID:	4323
UniProt:	P50281
Pathways:	Autophagy

Application Details

Application Notes:	WB 1:300-5000 FCM 1:20-100 IF()
Restrictions:	For Research Use only

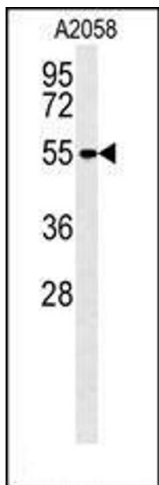
Handling

Format:	Liquid
Concentration:	0.5 µg/µL
Buffer:	0.01M TBS(pH 7.4) with 1 % BSA, 0.02 % Proclin300 and 50 % Glycerol.
Preservative:	ProClin
Precaution of Use:	This product contains ProClin: a POISONOUS AND HAZARDOUS SUBSTANCE, which should be handled by trained staff only.
Storage:	4 °C,-20 °C
Storage Comment:	Shipped at 4°C. Store at -20°C for one year. Avoid repeated freeze/thaw cycles.
Expiry Date:	12 months



Western Blotting

Image 1. HT-1080 Cells lysates probed with MMP14 (133CT15.10.5.1) Monoclonal Antibody, unconjugated (bsm-51028M) at 1:1000 overnight at 4°C followed by a conjugated secondary antibody for 60 minutes at Room Temperature.



Western Blotting

Image 2. Lane 1: A2058 Cell lysates, probed with MMP14 (133CT15.10.5.1) Monoclonal Antibody, unconjugated (bsm-51028M) at 1:500 overnight at 4°C followed by a conjugated secondary antibody for 60 minutes at 37°C.