

Datasheet for ABIN4912014
anti-CDC25C antibody



[Go to Product page](#)

1 Image

Overview

Quantity:	100 µL
Target:	CDC25C
Reactivity:	Human
Host:	Mouse
Clonality:	Monoclonal
Conjugate:	This CDC25C antibody is un-conjugated
Application:	Western Blotting (WB), Immunohistochemistry (Paraffin-embedded Sections) (IHC (p))

Product Details

Immunogen:	This MPIP3 antibody is generated from a mouse immunized with a recombinant protein.
Clone:	5C8
Isotype:	IgG2a
Cross-Reactivity:	Human
Purification:	Purified by Protein G.

Target Details

Target:	CDC25C
Alternative Name:	MPIP3 (CDC25C Products)
Background:	Synonyms: CDC25, PPP1R60, M-phase inducer phosphatase 3, Dual specificity phosphatase Cdc25C, CDC25C

Target Details

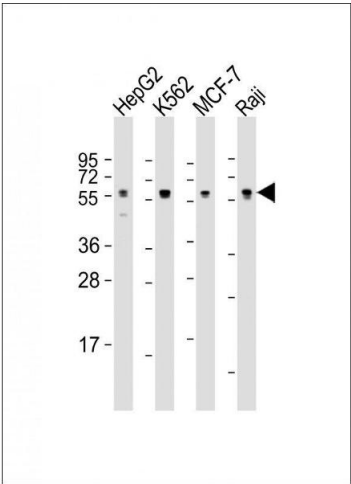
	Background: Functions as a dosage-dependent inducer in mitotic control. Tyrosine protein phosphatase required for progression of the cell cycle. When phosphorylated, highly effective in activating G2 cells into prophase. Directly dephosphorylates CDK1 and activates its kinase activity.
Gene ID:	995
UniProt:	P30307
Pathways:	Cell Division Cycle, M Phase

Application Details

Application Notes:	WB 1:300-5000 IHC-P 1:200-400
Restrictions:	For Research Use only

Handling

Format:	Liquid
Concentration:	0.5 µg/µL
Buffer:	0.01M TBS(pH 7.4) with 1 % BSA, 0.02 % Proclin300 and 50 % Glycerol.
Preservative:	ProClin
Precaution of Use:	This product contains ProClin: a POISONOUS AND HAZARDOUS SUBSTANCE, which should be handled by trained staff only.
Storage:	-20 °C
Storage Comment:	Store at -20°C for 12 months.
Expiry Date:	12 months



Western Blotting

Image 1. Lane 1: HepG2 Cell lysates, Lane 2: K562 Cell lysates, Lane 3: MCF-7 Cell lysates, Lane 4: Raji Cell lysates, probed with MPIP3 (1535CT627.6.80) Monoclonal Antibody, unconjugated (bsm-51315M) at 1:1000 overnight at 4°C followed by a conjugated secondary antibody for 60 minutes at 37°C.