

Datasheet for ABIN4913035

anti-PAK1IP1 antibody[Go to Product page](#)**1** Image

Overview

Quantity:	100 µL
Target:	PAK1IP1
Reactivity:	Human, Mouse, Rat
Host:	Mouse
Clonality:	Monoclonal
Conjugate:	This PAK1IP1 antibody is un-conjugated
Application:	Western Blotting (WB)

Product Details

Immunogen:	KLH conjugated synthetic peptide between 248-277 amino acids from the central region of rat Plp1.
Clone:	4E7
Isotype:	IgM
Cross-Reactivity:	Human, Mouse, Rat
Purification:	Purified monoclonal antibody supplied in PBS with 0.09% (W/V) sodium azide. This antibody is prepared by Euglobin precipitation followed by dialysis against PBS.

Target Details

Target:	PAK1IP1
Alternative Name:	Plp1 (PAK1IP1 Products)

Target Details

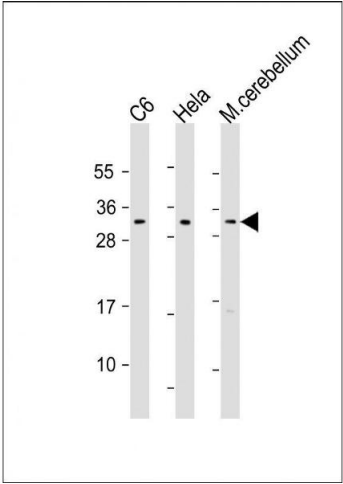
Background:	Synonyms: Plp, Myelin proteolipid protein, Lipophilin, Plp1 Background: This is the major myelin protein from the central nervous system. It plays an important role in the formation or maintenance of the multilamellar structure of myelin.
Gene ID:	24943
UniProt:	P60203
Pathways:	Telomere Maintenance

Application Details

Application Notes:	WB 1:300-5000
Restrictions:	For Research Use only

Handling

Format:	Liquid
Concentration:	0.5 µg/µL
Buffer:	0.01M TBS(pH 7.4) with 1 % BSA, 0.02 % Proclin300 and 50 % Glycerol.
Preservative:	ProClin
Precaution of Use:	This product contains ProClin: a POISONOUS AND HAZARDOUS SUBSTANCE, which should be handled by trained staff only.
Storage:	4 °C,-20 °C
Storage Comment:	Shipped at 4°C. Store at -20°C for one year. Avoid repeated freeze/thaw cycles.
Expiry Date:	12 months



Western Blotting

Image 1. Lane 1: C6, Lane 2: HeLa, Lane 3: mouse cerebellum lysate at 20 µg per lane, probed with bsm-51197M Plp1 (538CT16.5.4) Monoclonal Antibody at 1:1000 dilution and 4°C *overnight incubation, followed by secondary antibody incubation for 60min at room temperature.*