

Datasheet for ABIN4913193
anti-PPP2R5A antibody (AA 301-400)

2 Images

[Go to Product page](#)

Overview

Quantity:	100 µL
Target:	PPP2R5A
Binding Specificity:	AA 301-400
Reactivity:	Mouse
Host:	Rabbit
Clonality:	Polyclonal
Conjugate:	This PPP2R5A antibody is un-conjugated
Application:	Western Blotting (WB), ELISA, Immunofluorescence (Cultured Cells) (IF (cc)), Immunofluorescence (Paraffin-embedded Sections) (IF (p)), Immunocytochemistry (ICC), Immunohistochemistry (Paraffin-embedded Sections) (IHC (p)), Immunohistochemistry (Frozen Sections) (IHC (fro))

Product Details

Immunogen:	KLH conjugated synthetic peptide derived from human PPP2R5A
Isotype:	IgG
Specificity:	Might cross react with PPP2R5E due to sequence similarity of the following amino acids: EPLFKQIAK
Cross-Reactivity:	Mouse
Predicted Reactivity:	Human,Rat,Cow,Pig,Horse,Rabbit
Purification:	Purified by Protein A.

Target Details

Target:	PPP2R5A
Alternative Name:	PPP2R5A (PPP2R5A Products)
Background:	<p>Synonyms: Serine/threonine-protein phosphatase 2A 56 kDa regulatory subunit alpha isoform, PPP2R5A, PP2A B subunit isoform B'-alpha, PP2A B subunit isoform B56-alpha, PP2A B subunit isoform PR61-alpha, PR61alpha, PP2A B subunit isoform R5-alpha</p> <p>Background: The B regulatory subunit might modulate substrate selectivity and catalytic activity, and also might direct the localization of the catalytic enzyme to a particular subcellular compartment.</p>
Gene ID:	5525
UniProt:	Q15172
Pathways:	PI3K-Akt Signaling

Application Details

Application Notes:	WB 1:300-5000 ELISA 1:500-1000 IHC-P 1:200-400 IHC-F 1:100-500 IF(IHC-P) 1:50-200 IF(IHC-F) 1:50-200 IF(ICC) 1:50-200 ICC 1:100-500
Restrictions:	For Research Use only

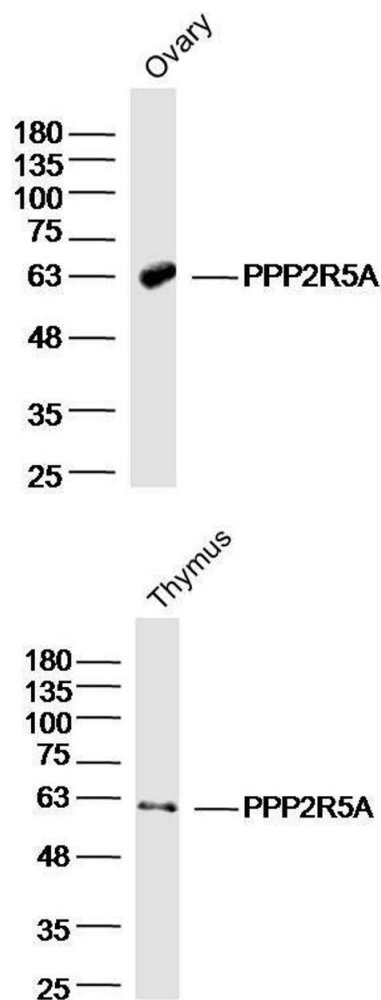
Handling

Format:	Liquid
Concentration:	1 µg/µL
Buffer:	0.01M TBS(pH 7.4) with 1 % BSA, 0.02 % Proclin300 and 50 % Glycerol.
Preservative:	ProClin
Precaution of Use:	This product contains ProClin: a POISONOUS AND HAZARDOUS SUBSTANCE, which should be handled by trained staff only.
Storage:	4 °C,-20 °C

Handling

Storage Comment:	Shipped at 4°C. Store at -20°C for one year. Avoid repeated freeze/thaw cycles.
Expiry Date:	12 months

Images



Western Blotting

Image 1. Mouse ovary lysates probed with PPP2R5A Polyclonal Antibody at 1:300 overnight at 4°C followed by a conjugated secondary antibody for 60 minutes at 37°C.

Western Blotting

Image 2. Mouse thymus lysates probed with PPP2R5A Polyclonal Antibody at 1:300 overnight at 4°C followed by a conjugated secondary antibody for 60 minutes at 37°C.