

Datasheet for ABIN4913534

anti-RBM6 antibody**1** Image[Go to Product page](#)

Overview

Quantity:	100 µL
Target:	RBM6
Reactivity:	Human
Host:	Mouse
Clonality:	Monoclonal
Conjugate:	This RBM6 antibody is un-conjugated
Application:	Western Blotting (WB)

Product Details

Immunogen:	This RBM6 antibody is generated from a mouse immunized with a recombinant protein of human RBM6.
Clone:	3C7
Isotype:	IgG1
Cross-Reactivity:	Human
Purification:	Purified by Protein G.

Target Details

Target:	RBM6
Alternative Name:	RBM6 (RBM6 Products)
Background:	Synonyms: 3G2, g16, DEF3, DEF-3, HLC-11, NY-LU-12, RNA-binding protein 6, Lung cancer

Target Details

antigen NY-LU-12, Protein G16, RNA-binding motif protein 6, RNA-binding protein DEF-3, RBM6
Background: Specifically binds poly(G) RNA homopolymers in vitro.

Gene ID: 10180

UniProt: [P78332](#)

Application Details

Application Notes: WB 1:300-5000

Restrictions: For Research Use only

Handling

Format: Liquid

Concentration: 0.5 µg/µL

Buffer: 0.01M TBS(pH 7.4) with 1 % BSA, 0.02 % Proclin300 and 50 % Glycerol.

Preservative: ProClin

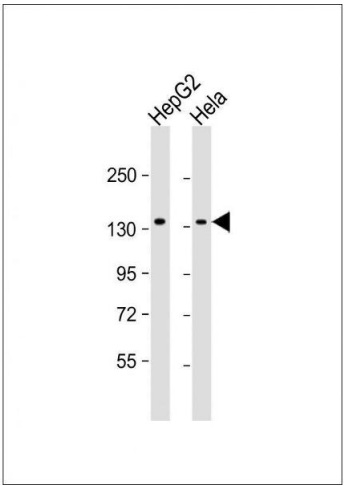
Precaution of Use: This product contains ProClin: a POISONOUS AND HAZARDOUS SUBSTANCE, which should be handled by trained staff only.

Storage: -20 °C

Storage Comment: Store at -20°C for 12 months.

Expiry Date: 12 months

Images



Western Blotting

Image 1. Lane 1: HepG2, Lane 2: HeLa cell lysate (20µg) probed with bsm-51328M RBM6 (1583CT111.17.7.37) Monoclonal Antibody at 1:1000 dilution and 4°C *overnight incubation, followed by secondary antibody incubation for 60min at room temperature.*