

Datasheet for ABIN4913773
anti-RPS6 antibody



[Go to Product page](#)

2 Images

Overview

Quantity:	100 µL
Target:	RPS6
Reactivity:	Human, Mouse, Rat
Host:	Mouse
Clonality:	Monoclonal
Conjugate:	This RPS6 antibody is un-conjugated
Application:	Western Blotting (WB), Immunofluorescence (IF), Immunohistochemistry (Paraffin-embedded Sections) (IHC (p)), Immunofluorescence (Cultured Cells) (IF (cc))

Product Details

Immunogen:	This RPS6 antibody is generated from a mouse immunized with RPS6 recombinant protein.
Clone:	9F2
Isotype:	IgG1
Cross-Reactivity:	Human, Mouse, Rat
Purification:	Purified monoclonal antibody supplied in PBS with 0.09% (W/V) sodium azide. This antibody is purified through a protein G column, followed by dialysis against PBS.

Target Details

Target:	RPS6
Alternative Name:	RPS6 (RPS6 Products)

Target Details

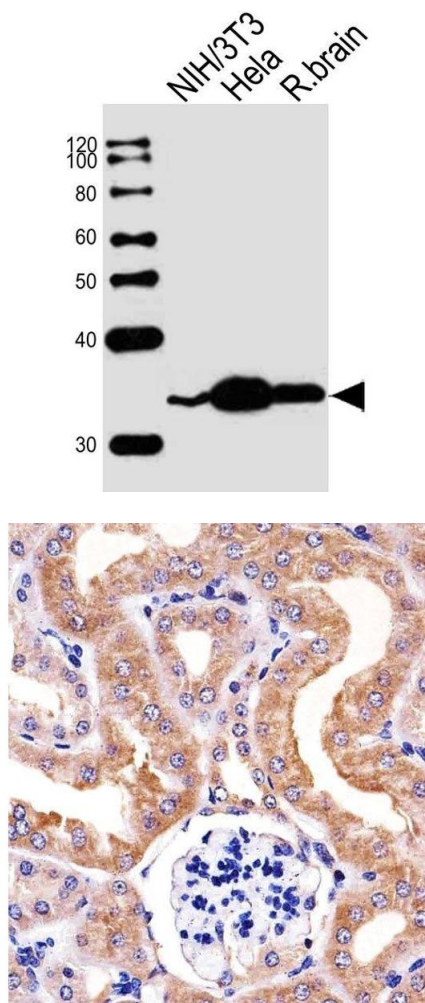
Background:	Synonyms: S6, 40S ribosomal protein S6, Phosphoprotein NP33, RPS6, OK/SW-cl.2 Background: May play an important role in controlling cell growth and proliferation through the selective translation of particular classes of mRNA.
Gene ID:	6194
UniProt:	P62753
Pathways:	Carbohydrate Homeostasis , Ribonucleoprotein Complex Subunit Organization , Ribosome Assembly

Application Details

Application Notes:	WB 1:300-5000 IHC-P 1:200-400 IF(ICC) 1:50-200 IF()
Restrictions:	For Research Use only

Handling

Format:	Liquid
Concentration:	0.5 µg/µL
Buffer:	0.01M TBS(pH 7.4) with 1 % BSA, 0.02 % Proclin300 and 50 % Glycerol.
Preservative:	ProClin
Precaution of Use:	This product contains ProClin: a POISONOUS AND HAZARDOUS SUBSTANCE, which should be handled by trained staff only.
Storage:	4 °C,-20 °C
Storage Comment:	Shipped at 4°C. Store at -20°C for one year. Avoid repeated freeze/thaw cycles.
Expiry Date:	12 months



Western Blotting

Image 1. Lane 1: NIH/3T3 cell lysates, Lane 2: Hela cell Lysates, Lane 3: Rat Brain tissue lysate, probed with RPS6 (981CT2.1.1) Monoclonal Antibody, unconjugated (bsm-51406M) at 1:1000 overnight at 4°C followed by a conjugated secondary antibody for 60 minutes at Room Temperature.

Immunohistochemistry (Paraffin-embedded Sections)

Image 2. Paraformaldehyde-fixed, paraffin embedded mouse kidney tissue, Antigen retrieval by boiling in sodium citrate buffer (pH6.0) for 15min, Block endogenous peroxidase by 3% hydrogen peroxide for 15 minutes, Blocking buffer (3% BSA) at room temperature for 30min, Antibody incubation with RPS6 (981CT2.1.1) Monoclonal Antibody (bsm-51406M) at 1:25 for 1 hour at 37°C, followed by a conjugated secondary antibody for 20 minutes and DAB staining.