

Datasheet for ABIN4914531

anti-TUBB1 antibody**2** Images[Go to Product page](#)

Overview

Quantity:	100 µL
Target:	TUBB1
Reactivity:	Human, Mouse
Host:	Mouse
Clonality:	Monoclonal
Conjugate:	This TUBB1 antibody is un-conjugated
Application:	Western Blotting (WB), Immunohistochemistry (Paraffin-embedded Sections) (IHC (p))

Product Details

Immunogen:	This monoclonal antibody is generated from mice immunized with a recombinant protein human TBB1.
Clone:	6A4
Isotype:	IgG1
Cross-Reactivity:	Human, Mouse
Purification:	Purified monoclonal antibody supplied in PBS with 0.09% (W/V) sodium azide. This antibody is purified through a protein G column, eluted with high and low pH buffers and neutralized immediately, followed by dialysis against PBS.

Target Details

Target:	TUBB1
Alternative Name:	TBB1 (TUBB1 Products)

Target Details

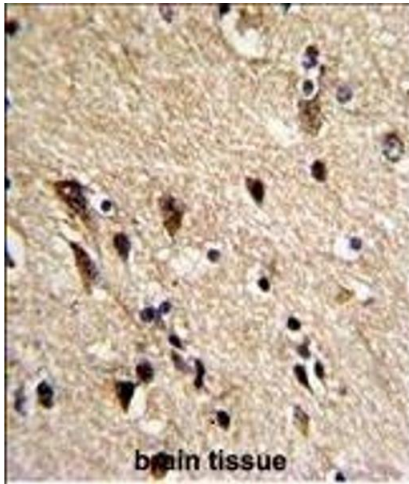
Background:	Synonyms: Tubulin beta-1 chain, TUBB1 Background: Tubulin is the major constituent of microtubules. It binds two moles of GTP, one at an exchangeable site on the beta chain and one at a non-exchangeable site on the alpha chain (By similarity).
Gene ID:	81027
UniProt:	Q9H4B7
Pathways:	Microtubule Dynamics

Application Details

Application Notes:	WB 1:300-5000 IHC-P 1:200-400
Restrictions:	For Research Use only

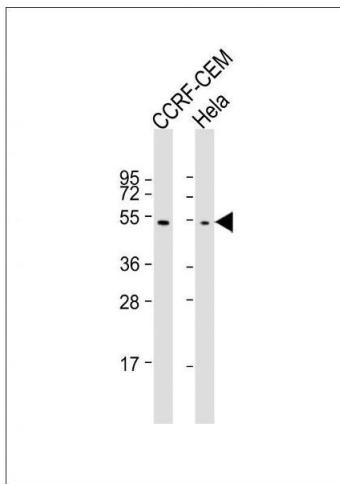
Handling

Format:	Liquid
Concentration:	0.5 µg/µL
Buffer:	0.01M TBS(pH 7.4) with 1 % BSA, 0.02 % Proclin300 and 50 % Glycerol.
Preservative:	ProClin
Precaution of Use:	This product contains ProClin: a POISONOUS AND HAZARDOUS SUBSTANCE, which should be handled by trained staff only.
Storage:	-20 °C
Storage Comment:	Store at -20°C for 12 months.
Expiry Date:	12 months



Immunohistochemistry (Paraffin-embedded Sections)

Image 1. Paraformaldehyde-fixed, paraffin embedded Human Brain tissue, Antigen retrieval by boiling in sodium citrate buffer (pH6.0) for 15min, Block endogenous peroxidase by 3% hydrogen peroxide for 15 minutes, Blocking buffer (3% BSA) at room temperature for 30min, Antibody incubation with TBB1 (86CT4.4.4) Monoclonal Antibody, Unconjugated at 1:10 for 1 hour at 37°C, followed by a conjugated secondary antibody for 20 minutes and DAB staining.



Western Blotting

Image 2. Lane 1: CCRF-CEM cell lysate (20ug), Lane 2: HeLa cell lysate (20ug) probed with bsm-51009M TBB1 (86CT4.4.4) Monoclonal Antibody at 1:1000 dilution and 4°C *overnight incubation, followed by secondary antibody incubation for 60min at room temperature.*