

Datasheet for ABIN4914983

anti-UBE2I antibody**1** Image[Go to Product page](#)

Overview

Quantity:	100 µL
Target:	UBE2I
Reactivity:	Human, Mouse, Rat
Host:	Mouse
Clonality:	Monoclonal
Conjugate:	This UBE2I antibody is un-conjugated
Application:	Western Blotting (WB)

Product Details

Immunogen:	This UBC9 antibody was raised using purified GST-UBC9 fusion protein.
Clone:	7A9
Isotype:	IgG1
Cross-Reactivity:	Human, Mouse, Rat
Purification:	Purified monoclonal antibody supplied in PBS with 0.09% (W/V) sodium azide. This antibody is purified through a protein G column, eluted with high and low pH buffers and neutralized immediately, followed by dialysis against PBS.

Target Details

Target:	UBE2I
Alternative Name:	UBC9 (UBE2I Products)

Target Details

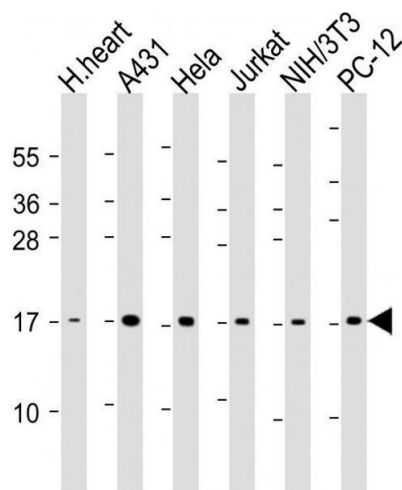
Background:	<p>Synonyms: P18, UBC9, C358B7.1, SUMO-conjugating enzyme UBC9, SUMO-protein ligase, Ubiquitin carrier protein 9, Ubiquitin carrier protein I, Ubiquitin-conjugating enzyme E2 I, Ubiquitin-protein ligase I, UBE2I, UBCE9</p> <p>Background: Accepts the ubiquitin-like proteins SUMO1, SUMO2, SUMO3 and SUMO4 from the UBLE1A-UBLE1B E1 complex and catalyzes their covalent attachment to other proteins with the help of an E3 ligase such as RANBP2, CBX4 and ZNF451. Can catalyze the formation of poly-SUMO chains. Necessary for sumoylation of FOXL2 and KAT5. Essential for nuclear architecture and chromosome segregation. Sumoylates p53/TP53 at 'Lys-386'.</p>
Gene ID:	7329
UniProt:	P63279
Pathways:	Intracellular Steroid Hormone Receptor Signaling Pathway , Regulation of Intracellular Steroid Hormone Receptor Signaling , Ubiquitin Proteasome Pathway

Application Details

Application Notes:	WB 1:300-5000
Restrictions:	For Research Use only

Handling

Format:	Liquid
Concentration:	0.5 µg/µL
Buffer:	0.01M TBS(pH 7.4) with 1 % BSA, 0.02 % Proclin300 and 50 % Glycerol.
Preservative:	ProClin
Precaution of Use:	This product contains ProClin: a POISONOUS AND HAZARDOUS SUBSTANCE, which should be handled by trained staff only.
Storage:	-20 °C
Storage Comment:	Store at -20°C for 12 months.
Expiry Date:	12 months



Western Blotting

Image 1. Lane 1: human heart lysate, Lane 2: A431 whole cell lysate, Lane 3: Hela whole cell lysate, Lane 4: Jurkat whole cell lysate, Lane 5: NIH/3T3 whole cell lysate, Lane 6: PC-12 whole cell lysate at 20 µg per lane, probed with bsm-51021M UBC9 (67AT1273.95.90) Monoclonal Antibody at 1:1000 dilution and 4°C *overnight incubation, followed by secondary antibody incubation for 60min at room temperature.*