

Datasheet for ABIN492533
anti-LY96 antibody (AA 2-160)[Go to Product page](#)

2 Images

Overview

Quantity:	0.1 mg
Target:	LY96
Binding Specificity:	AA 2-160
Reactivity:	Human, Mouse
Host:	Mouse
Clonality:	Monoclonal
Conjugate:	This LY96 antibody is un-conjugated
Application:	Western Blotting (WB), Immunohistochemistry (Paraffin-embedded Sections) (IHC (p)), Enzyme Immunoassay (EIA)

Product Details

Immunogen:	A recombinant protein corresponding to amino acids 2 to 160 of Human MD-2 (NP_056179).
Clone:	9F1B1
Isotype:	IgG
Characteristics:	Synonyms: Lymphocyte antigen 96, ESOP-1, LY96, ESOP1, MD2
Purification:	Immunoaffinity Chromotography.

Target Details

Target:	LY96
Alternative Name:	MD-2 (LY96 Products)

Target Details

Background: MD-2 is a member of the Toll/interleukin-1 receptor (TIR) family, a group of proteins that include the Toll-like receptors (TLRs). TLRs are signaling molecules that recognize different pathogen-associated molecular patterns (PAMPs) and serve as an important link between the innate and adaptive immune responses. TLR4, the major signaling receptor for lipopolysaccharide (LPS), requires the binding of MD-2 to its extracellular region for maximal response to LPS. The specificity of this response is determined by the species of MD-2, e.g., human MD-2 transfected into mouse cells can cause mouse TLR4 to react to LPS analogs that are normally antagonistic to human but not mouse TLR4. Synonyms: ESOP-1, ESOP1, LY96, Lymphocyte antigen 96, MD2

UniProt: [Q9Y6Y9](#)

Pathways: [TLR Signaling](#), [Activation of Innate immune Response](#), [Cellular Response to Molecule of Bacterial Origin](#), [Toll-Like Receptors Cascades](#)

Application Details

Application Notes: ELISA. Western Blot: MD2 antibody can be used for detection of MD2 at 0.5-1 µg/mL.
Immunohistochemistry: 2.5 µg/mL
Other applications not tested.
Optimal dilutions are dependent on conditions and should be determined by the user.

Restrictions: For Research Use only

Handling

Buffer: PBS containing 0.02 % Sodium Azide as preservative.

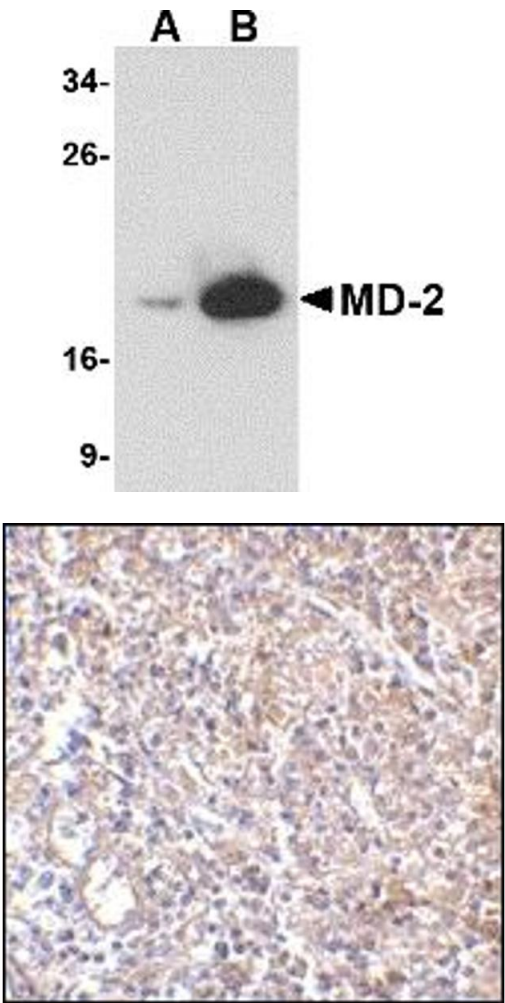
Preservative: Sodium azide

Precaution of Use: This product contains sodium azide: a POISONOUS AND HAZARDOUS SUBSTANCE which should be handled by trained staff only.

Storage: 4 °C

Storage Comment: Store the antibody undiluted at 2-8 °C.
Shelf life: one year from despatch.

Expiry Date: 12 months



Western Blotting

Image 1.

Immunohistochemistry

Image 2.