



[Go to Product page](#)

Datasheet for ABIN492535  
**anti-ORAI3 antibody (C-Term)**

2 Images

Overview

Quantity:	0.1 mg
Target:	ORAI3
Binding Specificity:	C-Term
Reactivity:	Human, Rat
Host:	Mouse
Clonality:	Monoclonal
Conjugate:	This ORAI3 antibody is un-conjugated
Application:	Western Blotting (WB), Immunohistochemistry (Paraffin-embedded Sections) (IHC (p)), Enzyme Immunoassay (EIA)

Product Details

Immunogen:	A 19 amino acid peptide from near the carboxy terminus of Human ORAI3
Clone:	2H2G9
Isotype:	IgG
Specificity:	Recognizes ORAI3. This antibody is predicted to have no cross-reactivity to ORAI1 or ORAI2. Larger molecular weight bands are sometimes seen in SDS-PAGE, these may represent post-translationally modified ORAI3.
Characteristics:	Synonyms: TMEM142C, ORAI-3, Transmembrane Protein 142C
Purification:	Immunoaffinity Chromotography.

## Target Details

---

Target:	ORAI3
Alternative Name:	ORAI3 ( <a href="#">ORA13 Products</a> )
Background:	Antigen stimulation of immune cells triggers Ca <sup>++</sup> entry through Ca <sup>++</sup> release-activated Ca <sup>++</sup> (CRAC) channels. ORAI3 is one of two mammalian homologs to ORAI1, a recently identified four-transmembrane spanning protein that is an essential component of CRAC. All three homologs have been shown to function as Ca <sup>++</sup> plasma membrane channels gated through interactions with STIM1, the store-activated endoplasmic reticulum Ca <sup>++</sup> sensor. However, ORAI3 channels failed to produce detectable Ca <sup>++</sup> selective currents in cells co-transfected with ORAI3 and STIM1, indicating that ORAI3 channels undergo a lesser degree of depotentiation than ORAI1 or ORAI2 (5). Na <sup>+</sup> currents through ORAI1, 2 and 3 channels were equally inhibited by extracellular Ca <sup>++</sup> , indicating that each have similar affinities for Ca <sup>++</sup> within the selectivity filter. Synonyms: ORAI-3, TMEM142C, Transmembrane Protein 142C
Gene ID:	93129
UniProt:	<a href="#">Q9BRQ5</a>

## Application Details

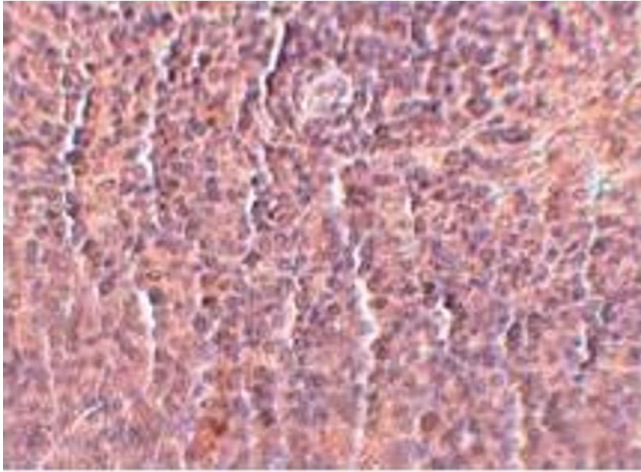
---

Application Notes:	ELISA. Western Blot: ORAI3 antibody can be used for detection of ORAI3 at 2-4 µg/mL. Immunohistochemistry: 2.5 µg/mL. Positive Control: Rat spleen tissue lysate. Other applications not tested. Optimal dilutions are dependent on conditions and should be determined by the user.
Restrictions:	For Research Use only

## Handling

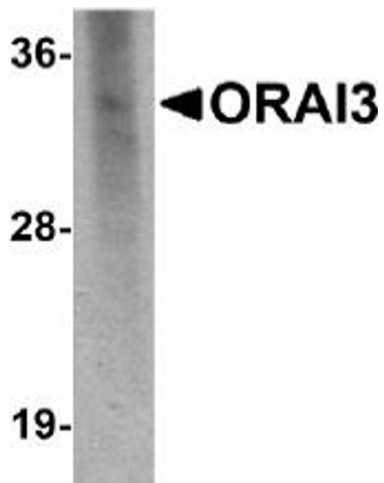
---

Buffer:	PBS containing 0.02 % Sodium Azide as preservative.
Preservative:	Sodium azide
Precaution of Use:	This product contains sodium azide: a POISONOUS AND HAZARDOUS SUBSTANCE which should be handled by trained staff only.
Storage:	4 °C
Storage Comment:	Store the antibody undiluted at 2-8 °C. Shelf life: one year from despatch.
Expiry Date:	12 months



### Immunohistochemistry

Image 1.



### Western Blotting

Image 2.