

Datasheet for ABIN492545
anti-ORAI1 antibody (C-Term)[Go to Product page](#)

2 Images

Overview

Quantity:	0.1 mg
Target:	ORAI1
Binding Specificity:	C-Term
Reactivity:	Human, Mouse, Rat
Host:	Mouse
Clonality:	Monoclonal
Conjugate:	This ORAI1 antibody is un-conjugated
Application:	Western Blotting (WB), Immunohistochemistry (Paraffin-embedded Sections) (IHC (p)), Enzyme Immunoassay (EIA)

Product Details

Immunogen:	A 16 amino acid peptide from near the carboxy terminus of Human ORAI1.
Clone:	3F6H5
Isotype:	IgG
Specificity:	Recognizes ORAI1. This antibody is predicted to have no cross-reactivity with ORAI2 or ORAI3.
Characteristics:	Synonyms: ORAI-1, CRACM1, TMEM142A, Protein orai-1, Transmembrane protein 142A, Calciumrelease-activated calcium channel protein 1
Purification:	Immunoaffinity Chromatography.

Target Details

Target:	ORAI1
Alternative Name:	ORAI1 (ORAI1 Products)
Background:	Antigen stimulation of immune cells triggers Ca ⁺⁺ entry through Ca ⁺⁺ release-activated Ca ⁺⁺ (CRAC) channels (1 for review). ORAI1 is a recently identified four-transmembrane spanning protein that is an essential component of CRAC. A missense mutation in this protein in humans is the cause of one form of hereditary severe combined immune deficiency (SCID) which results in ablated T-cell Ca ⁺⁺ entry (2). It has been suggested that ORAI1 functions as a highly selective Ca ⁺⁺ plasma membrane channel that is gated through interactions with STIM1, the store-activated endoplasmic reticulum Ca ⁺⁺ sensor (3). ORAI1 often migrates at a higher than expected molecular weight in SDS-PAGE. Synonyms: CRACM1, Calcium release-activated calcium channel protein 1, ORAI-1, Protein orai-1, TMEM142A, Transmembrane protein 142A
Gene ID:	84876
UniProt:	Q96D31
Pathways:	TCR Signaling , BCR Signaling

Application Details

Application Notes:	ELISA. Western Blot: ORAI1 antibody can be used for detection of ORAI1 at 1-2 µg/mL. Positive Control: Human Ovary Tissue Lysate. Immunohistochemistry: 2.5 µg/mL. Positive Control: Human Spleen Tissue. Other applications not tested. Optimal dilutions are dependent on conditions and should be determined by the user.
Restrictions:	For Research Use only

Handling

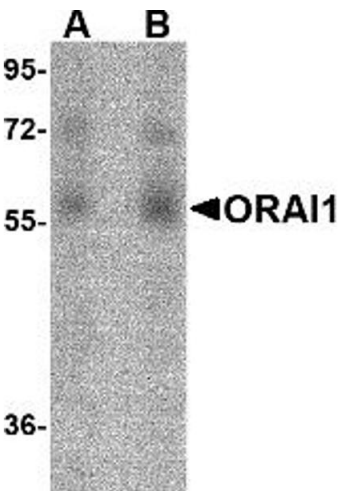
Concentration:	1.0 mg/mL
Buffer:	PBS containing 0.02 % Sodium Azide as preservative.
Preservative:	Sodium azide
Precaution of Use:	This product contains sodium azide: a POISONOUS AND HAZARDOUS SUBSTANCE which should be handled by trained staff only.
Storage:	4 °C
Storage Comment:	Store the antibody undiluted at 2-8 °C.

Handling

Shelf life: one year from despatch.

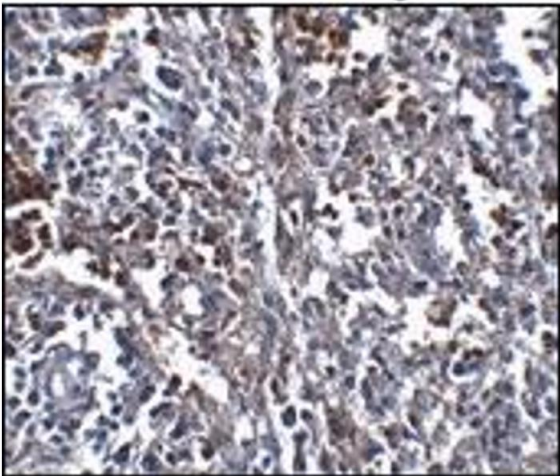
Expiry Date: 12 months

Images



Western Blotting

Image 1.



Immunohistochemistry

Image 2.